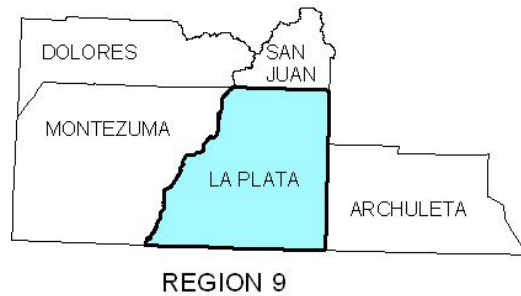


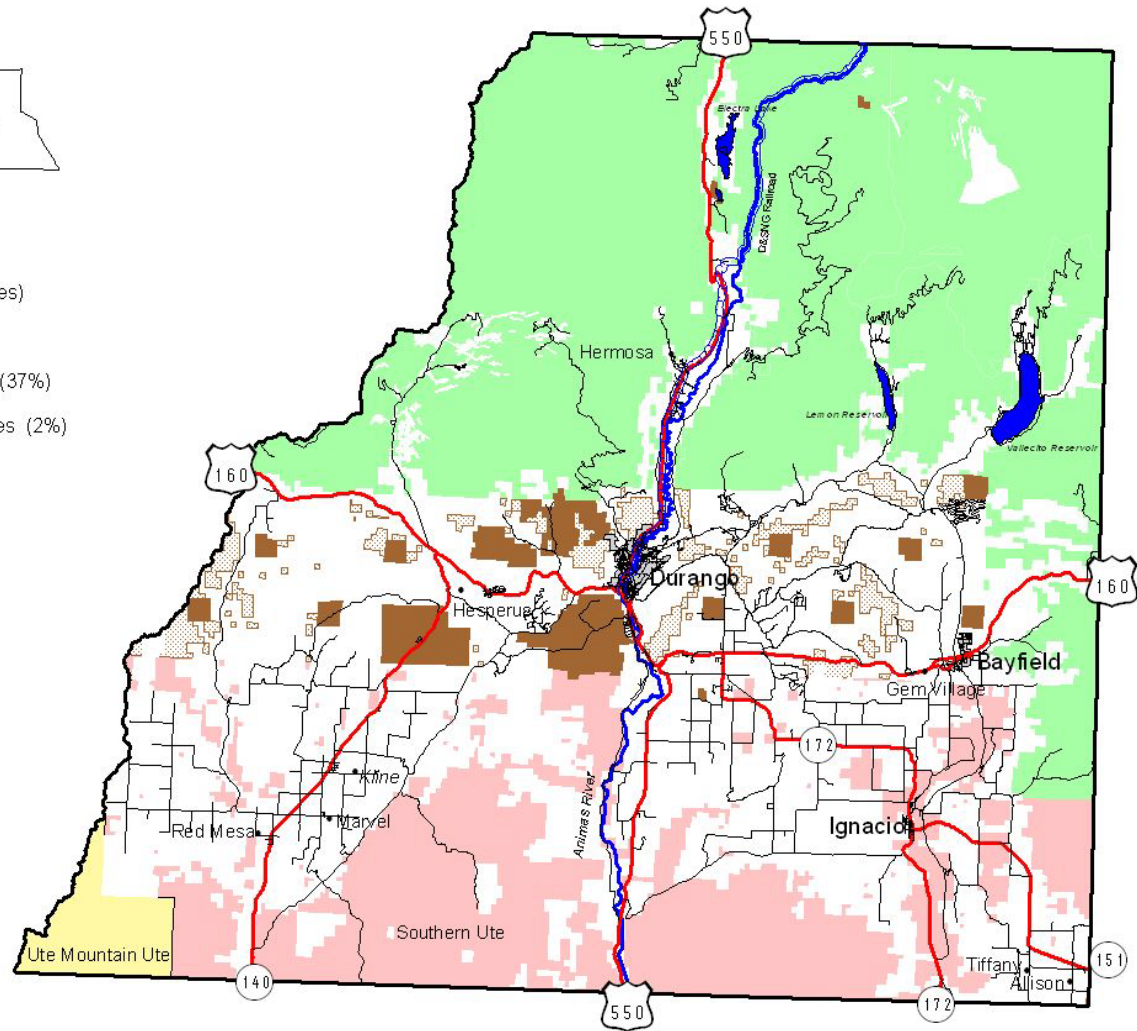
MAP OF LA PLATA COUNTY



- Land Area - 1,088,541 acres (1700sq. miles)
- Private Lands- 433,929 acres (40%)
 - San Juan National Forest- 400,370 acres (37%)
 - Bureau of Land Management- 21,824 acres (2%)
 - State Lands- 26,988 acres (2%)
 - Southern Ute Tribe- 179,055 (16%)
 - Ute Mtn Ute Tribe - 1,685 (0.1%)



0 1 2 3 4 5 Miles



5. La Plata County

TABLE OF CONTENTS

KEY HIGHLIGHTS AND PRIORITY ECONOMIC GOALS.....	1
STRATEGIC PLANNING	2
SWOT (Strengths, Weaknesses, Opportunities, Threats) Analysis.....	2
STRATEGIC DIRECTION – La Plata County Priorities and Projects	4
EVALUATION FRAMEWORK	7
Performance Measures.....	7
1.CDAP Project Completion 2001 - 2020	7
2. La Plata County Human Capital and Creation Index	11
3.La Plata County Economic Performance compared to all Other U.S. Counties	12
SUMMARY BACKGROUND	13
History and Economic Trends	13
Southern Ute Indian Tribe.....	13
Ute Mountain Ute Indian Tribe.....	13
Durango	14
Bayfield	14
Ignacio.....	14
La Plata County Government	15
Infrastructure and Services	15
Demographics	17
Snapshot of the Local Economy	17
Unemployment Rates	17
Commuting.....	18
Employment Sector Trends 2009 - 2019.....	19
2019 Employment	20
Economic Base Analysis	21
Per Capita Income	21
Total Personal Income	22
Total Personal Income Trends 1970 - 2019.....	22
COMMUNITY DEVELOPMENT ACTION PLAN	23
CDAP Project Ranking	24

(3) Public Comments Received (July 15th to August 15th)

- (1) “Looks thorough and well (sic)-thought out. Agree that Bayfield could use the projects outlined.”
- (2) “The estimated livable wage seems low for our region. Can we link the source to that number in the footnotes? "Across all industries the average annual wage is \$47,936. This is only 70% of the estimated livable wage (\$68,120) for two working adults with two children renting a two-bedroom unit." (pg. 5).” **Authors note – citation of the source is found on p.20.**
- (3) “Overall, the CEDS is well-researched and written. The gap (see La Plata Co input) may be the positive impact of "remote" or distributed workers that we are seeing at DurangoSpace (here in Durango) and in La Plata County. These professional women and men can work anywhere and earn higher wages and special money on housing and workspaces to support their work. In addition, the SW Colorado Accelerator Program for Entrepreneurs (SCAPE) has had a positive impact,

including the recent acquisition of MuniRevs by GovOS, that will stay here in La Plata County (SW Colorado) to grow their business and employment base. Both the "remote workers" and distributed professionals (that can work here in SW Colorado, but their companies service clients across the US and the world (in some cases) shift the business models of traditional industries and employment. Issues relate to broadband access, housing costs and transportation options."

KEY HIGHLIGHTS AND PRIORITY ECONOMIC GOALS

“La Plata County will be the premier Rocky Mountain destination to start, own, or grow a business, all while enjoying a superior quality of life.” Stakeholder Vision

Considering the ongoing COVID pandemic, economic recovery is at the top of the list in many community discussions. That emphasis will remain relevant but should include thinking more about how to provide a stronger social safety net for workers. Part of that notion is that the provision of quality, affordable childcare is an issue of primary economic importance. In La Plata County there is a broad-based coalition of educators, policy makers and citizens working on childcare initiatives.¹

The provision of affordable/attainable housing is a key issue in economic development throughout the county. Communities are struggling to provide workforce housing due to the high costs of building and low availability of housing stock, which is at least partially driven by affluent remote workers moving into the area. Housing experts agree that ideally a family should not spend more than one-third of their income on housing costs. Wages and employment in the county are highly dependent on service sector jobs (43% of employment). Many of the jobs in La Plata County are in accommodation and food services, with an average annual wage of \$21,462. Across all industries the average annual wage is \$47,936. This is only 70% of the estimated livable wage (\$68,120) for two working adults with two children renting a two-bedroom unit. The median price for a home in La Plata County in the first quarter of 2021 hit \$499,000, up from \$440,000 in the same quarter in 2020, a 13.4% increase.² And according to a faculty demand study by Fort Lewis College, based on the \$575,000 median sales price of a single-family home in Durango, a household would need an annual income of \$82,000. The average annual salary for a faculty member is \$66,838 and the average annual salary for a staff member is \$51,500.

Addressing homelessness is also an issue, particularly in Durango. According to a recent report homelessness is on the rise. The annual Point-in-Time count (PIT), mandated by the US Department of Housing and Development, found that people who are experiencing homelessness more than doubled in 2019 from the prior year's PIT count (from 91 to 192). This is considered to be an undercount by area agencies who, based on services provided, estimate the number to be closer to 300.³ Housing availability and a network of related services must be strategically aligned to reverse the trend in Durango.

The need for regional infrastructure improvements, including broadband and transportation, are reflected in the number of projects listed in the attached Community Development Action Plan (CDAP 2021). These include investments in roads and bridges as well as multi-modal transportation. In addition, a \$90 M bond issue for School District 9R (Durango) for facility upgrades and reconstruction just passed voter approval and moves towards implementation.

The county has many natural amenities that are also being considered in economic planning processes, recognizing that public lands are an important economic driver. The available natural resources make the county an attractive place to live and work and are a draw to outdoor enthusiasts. There are several proposed initiatives that encourage the appropriate use, development and responsible management of forest health, water, and wildfire risks. These include attracting timber related industries and associated jobs.

¹ https://buellfoundation.org/wp-content/uploads/2020/08/Buell_Report_Digital_Original_Optimized.pdf pages 41-43.

² <https://www.durangoherald.com/articles/bayfield-acts-to-address-housing-costs/>

³ <https://www.durangogov.org/DocumentCenter/View/16571/D-LPC-Strategic-Plan-on-Homelessness---Final>

STRATEGIC PLANNING

SWOT (Strengths, Weaknesses, Opportunities, Threats) Analysis

The starting point for a credible economic development strategic plan is an assessment of the strengths and weaknesses of the county. By working with La Plata County stakeholders and communities the following was identified:

Strengths

- Scenic and vast public lands and natural resources
- Lifestyle - climate/weather, sense of community, healthy and active lifestyle, livable communities, high degree of civic engagement
- Highly educated workforce
- Collaborative business community
- Regional hub - health facilities, strong base of goods/services, banking, arts/entertainment/culture
- Tourism and recreational assets
- Fort Lewis College and Pueblo Community College to generate well-educated workforce
- Southern Ute Indian Tribe and their economic success through the Growth Fund
- Infrastructure- regional airport, water, transportation hub
- Having a county level economic development group
- Southern Ute Indian Tribe
- Entrepreneurial orientation
- Lake Nighthorse
- Vital downtown in Durango
- Large and engaged volunteer network
- **Creation of a Wildfire Advisory Board with a strong volunteer presence**
- Overcoming reliance on oil and gas revenues

Weaknesses

- Low paying jobs and economic disparity
- High housing costs
- Lack of telecommunications and broadband infrastructure in rural areas
- Lack of robust transportation networks such as rail and highways
- Lack of transit for commuters
- Underemployment of skilled workers
- Lack of treatment facilities for substance and mental health concerns
- Distance to larger markets such as Denver and Phoenix
- Economic leakage to internet sales and Farmington, NM

Opportunities

- Geographic centrality to other rural markets that serves as a regional “hub”
- Balanced tax base drawing from property and sales tax
- Air Service – continued terminal expansion, increase market share and secure more flights
- Utilizing the area’s quality of life to attract and retain entrepreneurs, creative class talent, and well educated, younger workers
- Development of telecommuter businesses
- Well-educated population contributing to sustainability and growth of anchor businesses and institutions in the community (in areas such as education, health care, higher education, agriculture, etc.)
- Higher Education opportunities– MA/MBA programs, continuing education
- Pipeline of college graduates who would like to stay in the area
- Health care services – adding services, regional medical industries, and medical tourism
- Closing the gap between educational attainment and business needs
- Regulatory environment becoming more responsive to community needs
- Continued improvements to expensive and time-consuming permitting processes
- Natural Resource Management
- Durango’s URA, and other federal and state economic incentive programs that can be initiated throughout the county
- Identification of and cost of land for commercial use
- Economic and community development in Ignacio and Bayfield
- Redevelopment of the La Plata County Fairgrounds

Threats

- Economic and social disruption due to COVID
- Decline of oil and gas development for revenue, jobs
- High dependence on tourist & service industries
- Dependent populations outnumbering working age population
- Drought, wildfires, and beetle kill, which add ancillary costs to government budgets and homeowners (i.e., insurance), and threaten neighborhoods and key infrastructure
- Volatility of business cycle
- Potential for urban sprawl to impact the natural environment and tourism assets
- High housing costs and lack of diverse housing inventory
- Outmigration of working-class population
- Inadequate broadband infrastructure
- Disparity of access to high-speed internet
- Balancing local control with state regulation
- Ability to retain local businesses
- Finite water supply for development

STRATEGIC DIRECTION – La Plata County Priorities and Projects

La Plata County priorities and projects are developed through review of current projects, planning documents, small group discussions and interviews with community stakeholders, and those working on community projects. The CDAPs are presented at various community and public meetings and distributed for public comment for a period of one month. The CDAP has a total of 63 projects that were approved by the County Commissioners on September 14, 2021, signed by Marsha Porter-Norton – Chairwoman. The La Plata CDAP is included in this document on page 23.

The CDAP projects were aligned with the [State Rural Economic Blueprint](#). Priorities from the State Blueprint are assigned to specific projects in the CDAP. Priorities are numbered below for reference rather than level of importance.

1. **Leverage the Unique Assets of Rural Colorado**
2. **Save Coloradoans Money on Healthcare**
3. **Fulfill Every Child's Potential**
4. **Support Local Community Success in Energy Transmission**
5. **Make Critical Investment in Community Infrastructure**
6. **Invest in Roads and Bridges**
7. **Build on Successful Economic Development Programs**
8. **Community Identified Priorities – this was added for projects aligned more closely with local economic priorities**

The CDAP projects were also linked to six resiliency strategies identified in the [Colorado Resiliency Framework](#), which addresses potential and interrelated economic, social, and environmental risks and vulnerabilities. Abbreviations are listed next to the strategies in the CDAP along with a number representing the supporting strategy. Please refer to the Colorado Resiliency Framework for details.

1. **Future Ready Economy & Workforce (EW)**
2. **Climate & Natural Hazard Resiliency (CN)**
3. **Building & Infrastructure Sustainability (BI)**
4. **Agriculture & Food Security (AF)**
5. **Housing Attainability (HA)**
6. **Community Capacity (CC)**
7. **Internal to Community (IC) - this was added for projects aligned more closely with local resiliency strategies**

1: Leverage the Unique Assets of Rural Colorado

Linkage – Agriculture & Food Security (AF), Building & Infrastructure Sustainability (BI), Climate & Natural Hazard Resiliency (CN), Community Capacity (CC), Future Ready Economy & Workforce (EW)

Projects:

1. Infrastructure development for support of the designation of an "Economic Development Area" in proximity of the airport (CDAP #30, Resiliency CN1).
2. Implement initiatives that encourage the appropriate use, development and responsible management of natural resources including protection, preservation, and restoration (CDAP #31, Resiliency CN2).
3. Re-write Chapter 90 of the County Code (Natural Resources) (CDAP #32, Resiliency BI4).
4. Implement food systems planning and coordination at the food system and community level (CDAP #33, Resiliency AF1, AF5).
5. Stabilization and preservation of the Old Main Post Office (CDAP #36, Resiliency B15).
6. Service extension to serve "Economic Development Areas" as defined in the Land Use Code (CDAP #41, Resiliency BI4).
7. Create Rural Water System for West Side of County (CDAP #42, Resiliency BI4, CN2).

8. Pursue mitigation efforts to protect the Wildland Urban Interface (CDAP #45, Resiliency BI4, CN4).
9. Forest Health, Water and Wildfire Risks (CDAP #46, Resiliency CN3).
10. Develop Durango Mesa Park phase 1 (CDAP #47, Resiliency EW4, CC3).

2: Save Coloradoans Money on Healthcare

Linkage – Community Capacity (CC), Internal to Community (IC)

Projects:

1. Expand Mercy Regional Medical Center Heart & Vascular Care (CDAP #34, Resiliency IC).
2. Expand Mercy Regional Telemedicine Service (CDAP #35, Resiliency CN4, CC3).

3: Fulfill Every Child's Potential

Linkage – Building & Infrastructure Sustainability (BI), Community Capacity (CC), Future Ready Economy & Workforce (EW)

Projects:

1. Homegrown Talent Initiative-Durango High School (CDAP #63, Resiliency EW).
2. Implement Bond Measures for Durango Schools (CDAP #64, Resiliency BI1, CC3).

4: Support Local Community Success in Energy Transmission

Linkage – Climate & Natural Hazard Resiliency (CN), Community Capacity (CC)

Projects:

1. Implement initiatives that encourage the appropriate use, development and responsible management of natural resources including protection, preservation, and restoration (CDAP #31, Resiliency CN2).
2. Re-write Chapter 90 of the County Code (Natural Resources) (CDAP #32, Resiliency CN4, CC3).
3. Service extension to serve "Economic Development Areas" as defined in the Land Use Code (CDAP #41, Resiliency CN4).

5: Make Critical Investment in Community Infrastructure

Linkage – Building & Infrastructure Sustainability (BI), Community Capacity (CC), Housing Attainability (HA), Climate and Natural Hazard Resiliency (CN), Future Ready Economy & Workforce (EW), Internal to Community (IC)

Projects

1. Infrastructure development for support of the designation of an "Economic Development Area" in proximity of the airport (CDAP #30, Resiliency CN1).
2. Expand Mercy Regional Telemedicine Service (CDAP #35, Resiliency CN4, CC3).
3. Downtown Bayfield (CDAP #2, Resiliency BI1, BI5).
4. Major Employer with Primary Jobs in Bayfield (CDAP #3, Resiliency EW1, EW4).
5. Recruit National Chain Retail Stores to Bayfield (CDAP #4, Resiliency EW4).
6. Complete Fox Farm Village in Bayfield (CDAP #5, Resiliency HA).
7. Improve Storm Drainage in Bayfield (CDAP #6, Resiliency CN2, CN4).
8. Fiber Optic Backbone in Town of Bayfield (CDAP #7, Resiliency EW1).
9. Affordability & Economic Opportunity (CDAP #10, Resiliency HA1, HA2).
10. Affordable & Attainable Housing Development for Families & Workforce (CDAP #24, Resiliency HA1, HA2, HA3).
11. Improved Infrastructure with Future Vision & Planning (CDAP #26, Resiliency EW1, CC3).
12. Manageable Utility Rates through Independence or Adjustment (CDAP #27, Resiliency CN4, HA4, CC3).
13. Revitalization of the Regional Housing Alliance (CDAP #37, Resiliency HA1, HA2, HA3, HA4).
14. Secure funding for upgrades for County roads experiencing increased traffic (CDAP #39, Resiliency IC).
15. Support Special Districts in meeting service requirements within their defined service areas (CDAP #40, Resiliency BI1).
16. Rural High-Speed Connections & Fiber (CDAP #48, Resiliency EW1, BI6).

17. La Plata County - Durango Strategic Plan on Homelessness 2020 (CDAP #62, Resiliency HA1, HA2).
18. Implement Bond Measures for Durango Schools (CDAP #64, Resiliency CC, BI1).

6: Invest in Roads and Bridges

Linkage – Building & Infrastructure Sustainability (BI)

Projects

1. Construct Intersections for Bayfield Parkway/US 160 East & West of Bayfield (CDAP #8, Resiliency BI1).
2. Mobility: Accessibility, Transit, Transportation System (CDAP #15, Resiliency BI1).
3. Sanitation: water, sewer, stormwater, solid waste, recycling (CDAP #16, Resiliency BI1).
4. US 160 West Diamond Grind- 21750 (CDAP #19, Resiliency BI1).
5. US 550 and 30th Street Durango (CDAP #20, Resiliency BI2).
6. SH 172 at County Road 318- 21015 (CDAP #28, Resiliency BI1).
7. Southwest Colorado US 550-US 160 Connection South Design-Build Project (CDAP #51, Resiliency BI1).
8. US 550 intersection and pedestrian improvements from 9th Street to 12th Street in Durango (CDAP #52, Resiliency BI1).
9. US 160 and CR 225 intersection improvements (roundabout and safety improvements) Durango (CDAP #53, Resiliency BI1).
10. US 160 Elmore's East improvements including widening, access improvements, and wildlife mitigation (CDAP #54, Resiliency BI1).
11. US 160 Dry Creek improvements including widening, new structures, realignment of CR 223, shoulder widening, and access consolidation (CDAP #55, Resiliency BI1).
12. US 160 safety and mobility improvements including passing lanes, turn lanes, shoulders, and wildlife mitigation from CR 225 to Dry Creek (CDAP #56, Resiliency BI1).
13. Outrider stops and shelter improvements in Durango, Mancos, Cortez, Dolores, and Rico (CDAP #57, Resiliency BI1).
14. Outrider bus service between Durango and Pagosa Springs (CDAP #58, Resiliency BI1).
15. Outrider bus service between Durango and Dove Creek (CDAP #59, Resiliency BI1).
16. Durango Transit Zone 7 route expansions from city limits to Durango/La Plata County Airport, Hermosa, Durango West, Hesperus, and Edgemont (CDAP #60, Resiliency BI1).

7: Build on Successful Economic Development Programs

Linkage – Community Capacity (CC2), Future Ready Economy & Workforce (EW)

Projects

1. Implement food systems planning and coordination at the food system and community level (CDAP #33, Resiliency AF1, AF5).
2. Stabilization and preservation of the Old Main Post Office (CDAP #36, Resiliency B15).
3. Forest Health, Water and Wildfire Risks (CDAP #46, Resiliency CN3).
4. Develop Durango Mesa Park phase 1 (CDAP #47, Resiliency EW4, CC3).
5. Downtown Community Revitalization & Business Development (CDAP #22, Resiliency EW3, CC2, CC3).

8: Community Identified Priorities

Linkage – Internal to Community

Projects

1. Plan Bayfield 2018 (CDAP #1, Resiliency IC).
2. City of Durango Strategic Plan 2021 (CDAP #9, Resiliency IC).
3. Diversity, Equity Inclusion (CDAP #11, Resiliency CC1).
4. Enhanced Livability & Sense of Place (CDAP #12, Resiliency IC).
5. Environmental & Social Sustainability (CDAP #13, Resiliency IC).
6. Aviation (CDAP #17, Resiliency IC).
7. Asset Management and Facility Needs (CDAP #18, Resiliency IC).

8. Town of Ignacio Strategic Plan 2021-2023 (CDAP #21, Resiliency IC).
9. Community Engagement & Collaboration (CDAP #23, Resiliency CC2).
10. Stable & Effective Organizational Leadership (CDAP #25, Resiliency CC1, CC2, CC3).
11. La Plata County Comprehensive Plan 2017 (CDAP #29, Resiliency IC).
12. Add Airline Flight(s) & Round-Trip Routes at Durango-La Plata County Airport (CDAP #49, Resiliency BI1).
13. Continue Capital improvements to Durango/ La Plata County Airport (CDAP #50, Resiliency BI1).
14. Southern Ute Indian Tribe CEDS 2018-2022 (CDAP #61, Resiliency IC).
15. Facilities assessment for highest and best use of underutilized county properties (CDAP #65, Resiliency IC).

EVALUATION FRAMEWORK

The evaluation framework serves as a mechanism to gauge progress on the successful implementation of the overall CEDS while providing information for the CEDS Annual Performance Report, as required by the Economic Development Administration (EDA). These regular updates keep the strategic direction and action plan outlined in the CEDS current and the plan relevant. The evaluation framework is an important element of the ongoing planning process and should answer the questions “How are we doing?” and “What can we do better?”

Performance Measures

1.CDAP Project Completion 2001 - 2020

As part of the Comprehensive Economic Development Strategy process, completed projects from the Community Development Action Plans (CDAP) are removed when completed and included below. This allows us to track the progress of proposed projects to see if they have advanced through the action steps required for project completion.

La Plata County

Projects Completed Between 2001-2016

Established La Plata County Economic Development Action Partnership

Fort Lewis College Expansion: Center of Southwest Studies, Hesperus Hall, Student Life Center, Berndt Hall expansion, Clock Tower construction

Adopted County Trail Plan

La Plata County Fairgrounds Redevelopment

Completed Durango Community Recreation Center

Ignacio Volunteer Emergency Squad Building

Fire Protection District's Consolidation Study

Livestock Processing Facility

Construction of Fort Lewis College Child Development Center

Construction of Mercy Regional Medical Center Facilities

Provide additional space for La Plata County Road and Bridge Maintenance Shops

Assisted the Durango Silverton Narrow Gauge and Durango Mountain Resort

Sunshine Gardens Expansion

Miles for Smiles Mobile Dental Clinic

Construction of New Bayfield Town Hall

Construction of Crossroads Psychiatric Facility

Opened Boys & Girls Club in Durango

Construction of Senior Center in Bayfield

County Jail Expansion

Upgraded and Expanded Senior Center in Durango

Established Durango Community Learning Center Partnership (The Commons Building)
Provide Transit between Durango and Bayfield
City of Durango Comprehensive Plan
Enhance Fort Lewis College *Econometer* Publication
Construct City of Durango Transit Center
Expand Bayfield Sanitation District
Expanded Regional Air Service
Van Den Berg Metro District Improvements
Add 4th lane to Farmington Hill
Permanent Facility for Bayfield Early Education Program
Implementation of Children Youth & Family Master Plan
Renovate historic power plant into Durango Discovery Museum
Emergency Operations Plan completed for Pandemic and Emergency Planning and Preparedness
Install Electronic Medical Records System (EMR) at Mercy Regional
Develop La Plata Health Care Strategic Plan to Meet Primary Health Care Needs for Underserved
Completed Ignacio Area Corridor Access Plan
Complete runway extension, reconstruction of terminal roads & general aviation parking apron at Durango / La Plata County Airport
Expanded Recycling Services in Durango (single stream)
Addressed infiltration in Bayfield Wastewater collection system
Completed storm and wastewater system in Bayfield
Decommission Wastewater lagoons, Bayfield
Construct new Middle School in Ignacio
Formalized a donated medical care program for indigent populations (La Plata Integrated Care)
Complete Smith Sports Complex at FLC
Completed redevelopment of the Whitewater Park in Durango
Welcome Center relocated to downtown Durango
Installed photovoltaic Solar Power System on Bayfield Senior Center
Completed Energy Efficient lighting retrofits on Animas River Trail
Hired full-time Durango Central Business District Director
Completed Animas River Access Corridor Plan
Completed Lightner Creek Bridge Replacement, 24th St. Bridge
Complete Phase 3 gas line replacement
Medical Clinic opened in Bayfield
Updated Durango Land Use Development Code
Replace Greyhound route between Durango & Grand Junction
Expanded parking and Departure Lounge at Durango/LaPlata County Airport
Recruited Grocery, Pharmacy & General Merchandise

Projects Completed Between 2016-2018

Business Development

- Completed Wayfinding and Signage Plan – Bayfield
- Completed Business Park Feasibility Study – Durango/La Plata County
- Pursue Major Employer with Primary Jobs – Tailwind Nutrition relocated to Bayfield
- Revitalize Downtown Ignacio – designed streetscape plan, implemented first steps of IACAP project at Ute Street one-way, promoted business façade improvement loan program.

Education

- Completed Geo Physical Sciences Building at Fort Lewis College
- Constructed New Intermediary School Facility in Bayfield (acquired BEST Grant and voters approved property tax increase in 2016).

Health & Human Services

Update 2021

- Constructed Hospice Care Facility & Patient Family Residence - Mercy Regional Medical Center
- Create a Health Information Exchange - Mercy Regional Medical Center.

Housing

- Analyzed Housing Issues within the City of Durango, adopted Housing Plan

Land Use

- Created 11 Character Districts within the City of Durango
- Revised & Updated the Town of Bayfield Comprehensive Plan
- Updated the City of Durango Comprehensive Plan
- Updated the La Plata County Comprehensive Plan.

Parks & Recreation

- Completed Development of SMART 160 Trail Section in Durango – Crader, Animas River Trail to Farmington Design
- Developed Park, Open Space & Trails Master Plan in Bayfield
- Developed & Opened Lake Nighthorse for Recreation – Durango.

Public Infrastructure

- Completed Federal Courthouse Remodel in Durango
- Completed Remodel of Former Vectra Bank to be new County Administration Building
- Developed Southwest Regional Recycling Facility
- Explored Improvements & Possible Relocation of Multi-Agency Gun Range (study completed in 2017 did not reveal a viable site)
- Identified & Improved Accessibility for Persons with Disabilities – N. Main handicapped ramp project 17th – 33rd streets and Safe Routes to School Needham Connect Phase I in Durango
- Implemented Partial North Main Mobility Plan Phases – restriped roads to improve bike & pedestrian safety, completed N. Main Character District Plan
- Installed Water Reuse System at Wastewater Treatment Facility – Bayfield
- Waterline Replacement & Water Isolation Valve Project – Bayfield.

Transportation

- Pedestrian and Bicycle Improvements Needham Connect Phase I - Durango
- Reconstruct CR 320 to Urban Standards – Ignacio
- Replace Twin Bridges on Bayfield Parkway & Install Pedestrian Bike & Walking Underpass & Path Extension – Bayfield
- CR 302 Mill & Overlay – County
- Intersection Improvements (25 + paved approaches at County Roads and State Highways) – County.

Projects Completed Between 2018-2020

Business Development

- Revitalize Downtown: updated welcome signage, prioritized revitalization, and beautification – Ignacio
- Determine Feasibility of Industrial Business Park Locations & Infrastructure.

Education

- Respond to regional school district and community priorities for college and workforce training: Pueblo Community College of SW Colorado increased concurrent enrollment in Durango 9-R high schools with the opening of Durango Site. Developed & delivered FLEXible delivery to all students due to COVID-19 so students could attend in person or from home. Opened PCC Bayfield Site in September 2019.

Update 2021

Housing

- Provide Second Mortgage Loans for Low & Moderate Families in La Plata County (Homesfund)
- Energy efficient improvements on homes in La Plata County (4CORE)

Land Use

- Continue Character District Projects within the City of Durango: North Main, Camino Del Rio and South Fork Character Districts are completed. College & 8th Character District were slated for completion but were delayed due to COVID.
- Revise the City of Durango Sign Code: update completed in 2019
- Revise & Update the La Plata County Land Use Code
- Implemented emergency watershed protection program

Public Infrastructure

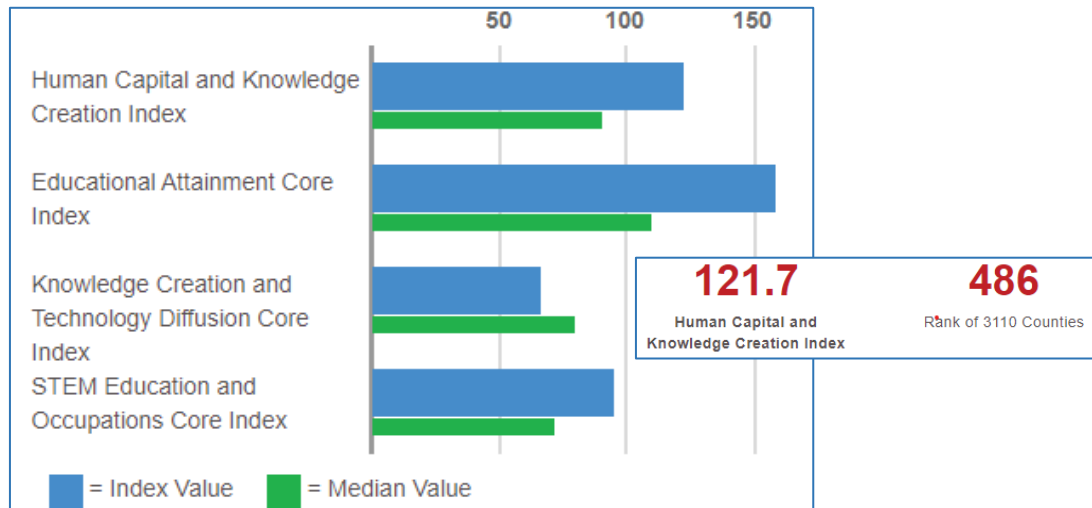
- Complete Feasibility Study & Develop a Plan for Installation of Solar Arrays at City Facilities-Durango
- Complete Municipal Wastewater Treatment System & Plant in Durango
- Replace Greenmount Parks Shop-Durango
- Improve Storm Drainage in Durango-Phase I completed
- Complete County Facilities Master Plan Projects: Remodel Courthouse facility to better serve state and federal needs. Construct building for the Assessor/Clerk/Treasurer offices. Remodel the old National Guard Armory to house Sheriff's office staff and Search and Rescue personnel. Remodel county administration building
- Implement Master Plan for La Plata County Multi-Use Events Center: Secure site for multi-use event center. Develop recreational and event space and facilities.

Transportation

- CR 502 Box Culvert project: Replace two irrigation culverts with box culverts – Bayfield
- Connect Pedestrian & ADA Facilities: Improved access, safety, and connectivity – Durango
- Complete Phase II Pedestrian & Bicycle Improvements in Durango: Improve access and safety for pedestrian and bicycles around Needham Elementary.

2. La Plata County Human Capital and Creation Index

<https://www.statsamerica.org/>

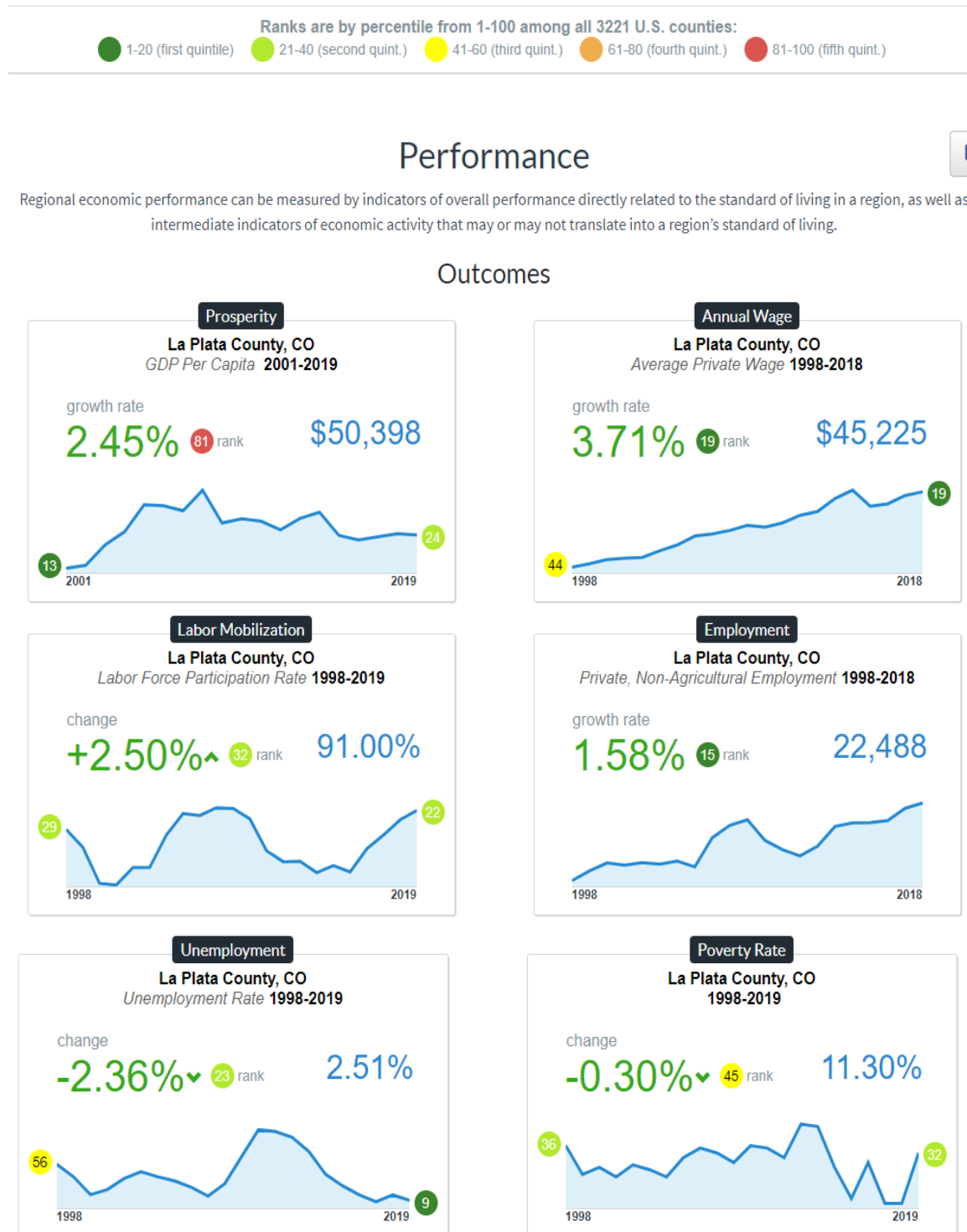


Measure	Index	Rank
📍 "Salad Days" Population Growth (Ages 25-44)	186.1	247
Educational Attainment Core Index	158.2	94
📍 High School Attainment (Ages 18-24)	161.2	549
📍 Some College, No Degree (Age 25+)	140.3	894
📍 Associate Degree (Age 25+)	92.7	1,728
📍 Bachelor's Degree (Age 25+)	199.2	55
📍 Graduate Degree (Age 25+)	197.6	118
Knowledge Creation and Technology Diffusion Core Index	66.1	1,869
📍 Patent Technology Diffusion	119.7	909
📍 University-Based Knowledge Spillovers	0.0	2,124
📍 Business Incubator Spillovers	78.7	1,874
STEM Education and Occupations Core Index	94.9	851
📍 STEM Degree Creation (per 1,000 Population)	95.9	250
📍 Technology-Based Knowledge Occupation Clusters	97.4	1,549
📍 High-Tech Industry Employment Share	91.6	1,449

Human capital and knowledge creation affect the degree to which a county's labor force can engage in innovative activities. Growth in a county's workforce ages 25 to 44 signifies that a county is becoming increasingly attractive to younger (arguably more energetic) workers—those more likely to contribute to innovation. Counties with high levels of human capital are those with enhanced knowledge, measured by educational attainment, patent diffusion, knowledge spillover, business incubator presence, STEM degree holders and occupations, and the share of high-tech employment. Higher levels of human capital are associated with higher levels of innovation and faster diffusion of technology.

3. La Plata County Economic Performance compared to all Other U.S. Counties

https://clustermapping.us/region/county/la_plata_county_co/performance



SUMMARY BACKGROUND

History and Economic Trends

The planning and management area of Region 9 includes two Indian reservations, including the Southern Ute and the Ute Mountain Ute Indian Tribes. A portion of the Southern Ute Reservation (125,706 acres) lies within La Plata County, as does a portion of the Ute Mountain Ute Reservation (1,685 acres).

Historically, the Utes roamed throughout the Four Corners and Western Colorado in several distinct hunter-gatherer bands. The Southern Ute divisions were the Muache, Capote, and Weeminuche. As a result of the Dawes Act in 1887, and the subsequent Act of 1895, the previously defined Southern Ute reservation lands were broken into two distinct units. Most of the Muache and Capote Utes accepted farming allotments in the eastern portion, which became known as the Southern Ute Indian Reservation with agency headquarters at Ignacio, in La Plata County. The Weeminuche Utes, led by Chief Ignacio, refused to accept allotments, and moved to the western portion, which became known as the Ute Mountain Ute Indian Reservation with agency headquarters at Towaoc, in Montezuma County.

Southern Ute Indian Tribe

The Southern Ute Tribal enrollment is currently about 1,500, with most of the members living on the reservation. The reservation land base includes 750,000 acres, seven major rivers, and the Navajo State Park. Tribal headquarters are located adjacent to the Town of Ignacio, in La Plata County.

Over the past 25 years, the Southern Ute Indian Tribe has become a major player in the local, state, and national economy. The Tribe is aggressively creating and operating new businesses both on and off-Reservation in the areas of oil and gas production, natural gas gathering, real estate development, housing construction, sand and gravel products, media, and gaming. The Tribe currently is the largest employer in La Plata County. The Sky Ute Lodge and Casino opened in 2008. Through contributions of a percentage of its annual gaming revenue, the Tribe is a supporter of many area non-profit organizations. The Southern Ute Growth Fund was started in 1999 and has investments spanning America and Canada. The Growth Fund reports a portfolio of over \$1 billion. In summary, Tribal activity, including gaming, generates millions of dollars per year in La Plata County, in direct and indirect economic activity. The Tribe has prepared its first CEDS (2018 – 2022) with strategies for economic growth and diversification.

Ute Mountain Ute Indian Tribe

The Ute Mountain Ute Tribe's land is in southwest Colorado and eastern Utah and covers 910 square miles. The land is held in trust by the United States Government. The Tribal enrollment in 2019 was 2,134 with most of the members living on the reservation in Towaoc, Colorado (Montezuma County), and in White Mesa, Utah. The Tribal census shows the largest percentage of the members are in their early twenties and younger.

The Ute Mountain Ute Tribe is a major contributor to the regional economy. In 2019, the Tribe was one of the largest employers in Montezuma County with ~1,300 jobs in all aspects of tribal government and operations, and at their Ute Mountain Casino and RV Park. The Colorado Ute Water Settlement Act of 1988 mandated, through the building of the Dolores Project and McPhee Reservoir, that drinking, and irrigation water be provided to the reservation. This has dramatically expanded farming and ranching operations. Other tribal resources include income from oil and gas wells, and tribal enterprises that revolve around tourism such as the Tribe's Ute Mountain Ute Tribal Park and the Ute Mountain Indian Trading Company & Gallery. The Tribe has updated their *Ute Mountain Ute Tribe Comprehensive Economic Development Strategy* (2019 - 2024).

Durango

The county seat of Durango was established in 1881. The historic district of downtown Durango was platted by the railroad that established the narrow-gauge Denver and Rio Grande Railroad. Durango became a rail hub because it had the combination of the Animas River and nearby coal sources needed to fuel a smelter and coal driven steam engines to process ore from the mines in San Juan County. With the dedication of the "Million Dollar Highway" in July of 1924, the transportation of gold, silver, lead, copper, and zinc moved from the narrow-gauge train to Highway 550 which connects Durango to Silverton.

Beginning in the late 1950s, the rail line that had carried ore down from Silverton began, instead, to carry tourists up from Durango to enjoy the spectacular scenery. Train ridership was 1 in 2015; a portion of these trips were to seasonal destinations short of Silverton, i.e., the Great Pumpkin Patch and the Polar Express. Durango also developed as a hub for other modes of transportation. Durango is at the intersection of Highway 160, the major east-west arterial in Southwest Colorado and Highway 550 a major north-south arterial in southwest Colorado. Durango / La Plata County also developed the most extensive air hub in southwest Colorado. Because of its location within the larger region, Durango has become a tourist crossroads and regional trade center

Bayfield

The early residents of the Pine River Valley were the Ute Indians. Their descendants are still in the area, primarily on the Southern Ute Reservation and in the Ignacio area at the south end of the valley. The Pine River Valley was settled by non-Native Americans in the late 1800s. The first cattle were brought into the valley in 1875. The area gradually opened as ranchers discovered the fertile valley. Much of the land was homesteaded by squatters' rights.

The Town of Bayfield was incorporated in 1906. The town has experienced the tragedies of fire (1902, 1905, 1920, and 1946) and floods (1911, two in 1927, and 1957). After the floods of 1927, a proposal was written for a dam on the Pine River for flood control and irrigation. Vallecito Dam was built in 1939 and its lake now provides recreation as well as flood control and irrigation.

Bayfield has since served as a supply town and social center for area farmers and ranchers, and more recently as a bedroom community for Durango. It has remained a quiet town, riding the booms and busts that are typical of Colorado's economy. In recent years, it has experienced rapid growth and has become the fastest growing municipality in southwestern Colorado.

Ignacio

The early residents of the Ignacio area were the Ute Indians, primarily the Weminuche band. Their traditional territory extended west of the continental divide to the Blue Mountains and canyon lands of south-east Utah, and north of the San Juan River, which generally marked their boundary with the Navajos. Although the boundaries of the Ute Reservation have changed with the passing of various treaties, the original "Ignacio Agency" for the Southern Ute Tribe was founded in 1877 amidst a permanent population of Spanish Americans (Hispanics), Navajos, Paiutes, Anglos and Jicarilla Apaches living in the area. Within a few months of the founding of the Ignacio Agency a greater influx of Spanish American settlers arrived from communities in northern New Mexico and the San Luis Valley to the east. In 1913, Ignacio was incorporated.

At present Ignacio remains a tri-ethnic community, composed of Southern Utes, Hispanics, and Anglos. Today the town serves as a supply center for the surrounding reservation and ranches and is a crossroads for the gas and oil industry. The Southern Ute Tribal headquarters is located just north of the town limits and provides administration and services to tribal members. Services and facilities provided by the Tribe are, for the most part, separate from those provided by the Town of Ignacio and are not specifically addressed in this profile.

La Plata County Government

La Plata County is one of 64 counties created by the State of Colorado. The responsibilities of implementing state law and managing county business are shared by elected officials, including Assessor, Clerk and Recorder, District Attorney, Sheriff, Treasurer, Coroner and Surveyor. An elected three-member Board of County Commissioners is the chief legislative and executive body of the County. Their duties include overseeing county budget, land use policy, social services, and road maintenance and construction, and public health programs. In addition to these 10 elected officials the county budgeted for a staff of 422 in 2021.

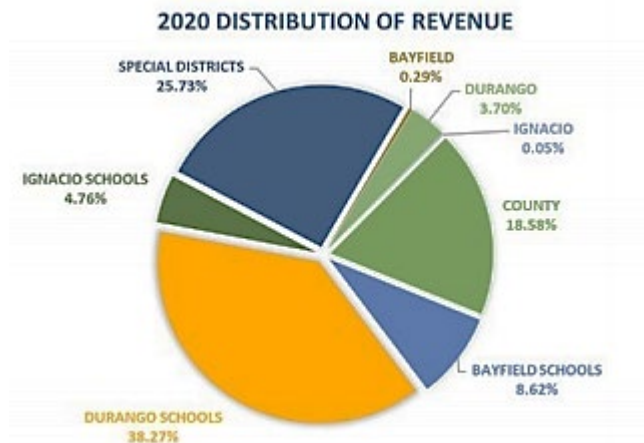
Expenditures

La Plata County provides many different services to its citizens, including public safety, roads and bridges, and health and welfare. Estimated expenditures for La Plata County total \$115,202,100 for 2021. ⁴

Revenues

The County expects to receive revenues of about \$85,730,807 in 2021. Approximately \$20 million, or 25.67%, will come from non-local tax sources such as federal and state funding for social service programs, highway users' taxes, grants and sales taxes generated by visitors to the county. The balance of \$41 million will come from sales and property taxes paid by local citizens.

Property tax revenues are distributed among municipalities, school districts and special districts (i.e., fire protection and sanitation). Special Districts set additional tax levies.



Infrastructure and Services

Electric - The county is served by the La Plata Electric Association.

Natural Gas - Most of the county is served by Atmos Energy or various propane distributors. The Town of Ignacio owns and operates its own natural gas distribution system.

Water - Durango and Bayfield have municipal water systems. Ignacio contracts water through the Southern Ute Tribe. Other residents are served by several other rural water districts, such as Forest Lakes Metropolitan District, La Plata Archuleta Water District and Lake Durango Water District, or have their own wells.

Wastewater - Durango and Bayfield have municipal wastewater systems. Ignacio contracts wastewater treatment through the Southern Ute Tribe. Others are served by rural water or sanitation districts or have their own septic systems.

Solid Waste - Most of the area is served by Waste Management and Phoenix Recycling. The City of Durango also provides trash pickup and curbside recycling services for City residents. WCA (Waste Corporation of America) operates the Bondad landfill in the southern part of the county. La Plata County offers two Transfer Station locations for trash and recycling drop off.

⁴ <https://cms9files.revize.com/laplatacounty/assessor/Abstract%20of%20Assessment/2020%20Pamphlet%203.pdf>
5 – La Plata County CEDS

Police & Fire Departments - Durango, Bayfield, Ignacio, and the Southern Ute Tribe each have police personnel. The balance of the county depends on the Sheriff's Department. For fire protection, the Durango Fire Protection District serves Durango, Hermosa, and Hesperus areas; Upper Pine River Fire Protection District serves, Bayfield, Forest Lake and Vallecito Lake area; Los Pinos Fire Protection District serves Ignacio, Allison, and Tiffany(southeastern La Plata County); and Fort Lewis Mesa Fire Protection District serves Breen, Marvel, Kline (western La Plata County).

Telecommunications - There are a variety of providers that serve the county.

Medical Facilities - Mercy Regional Medical Center provides ICU/critical care/cardiology services that are available 24 hrs. a day, 7 days a week. Mercy is a Level III trauma center and is licensed for 82 private beds. The privately owned Animas Surgical Hospital provides facilities for surgeries and outpatient care, diagnostic imaging, urgent care and operates an emergency room. There are numerous medical practices in the various municipalities.

Business Parks - **Durango** (Bodo Industrial Park, the Durango Tech Center, Animas Air Park and Rancho Vellido Phase I & II {Grandview}). The Airport Business Park is in "preliminary approval" status; the conceptual plan has been approved, but no development agreement has been made. La Plata County, the City of Durango and property owners on CR 213 are studying economic benefits of creating a Business Park on CR 213, east of Animas Air Park. **Bayfield** (Bayfield Business Center): **Ignacio** (No business parks).

Major Employers - 2019 Top 10 Employers: Southern Ute Indian Tribe (1,545), Mercy Regional Medical Center (941), Purgatory Recreation Management LLC (850), Durango School District 9-R (788), Fort Lewis College (680), La Plata County (395), Bayfield School District #10 (390), City of Durango (354), Walmart (322), Rocky Mountain Chocolate Factory (190). Data Source: Region 9 Economic Development District.

Recreation Facilities – (2020) **Durango** community facilities include soccer fields, baseball and softball fields, tennis courts, skate park and whitewater park. Facilities at Chapman Hill include a refrigerated ice-rink as well as a ski hill. Durango has a 71,560 square foot community recreation center. There are 8 access points to the Animas River. Durango has over 93 miles of soft surface trails and 14.5 miles of hard surface trails. Durango has 38 parks comprising 288 acres and 3,001 acres of open space. Data Source: City of Durango.

Bayfield community facilities include a community gymnasium and a senior center. Joe Stephenson Park includes a playground, baseball fields, a skate ramp, and a soccer/football/track field. Other athletic fields (football, baseball) are at the High School. Recent additions include a trail system. Bayfield has 6 parks. Bayfield is considering adding some white-water rafting features.

Ignacio community facilities include access to the SunUte Community Center with a gymnasium, fitness and aquatic facility, and the Town Park. Ignacio has 2 parks, used for Baseball leagues in the summer and the Youth Football League in the fall. There are picnic tables and grills, a tennis court (being re-built) with a basketball hoop at one end for half court play, a short River Trail, and children's play equipment. Ben Night-horse Community Park has a large playing field for running, ball throwing, etc., and children's play equipment. There is a standalone basketball court at the south end of downtown.

Throughout the county there are surrounding public lands as well as several school athletic fields including Fort Lewis College.

Housing – (2020) In La Plata County the median price for a residence was \$499,000; in town for Durango the median was \$878,000; and in town Bayfield the median was \$399,000. Data Source: Durango Area Association of Realtors®

Child Care Availability – (2020) In La Plata County there are 44 licensed childcare programs with 1,201 Total Slots (Ages 0-5). Data Source: Childcare Resource and Referral.

Long term care facilities - (2020) There are 5 facilities with a total of 266 beds, 169 are in skilled nursing facilities and 97 are in assisted living facilities. Data Source: San Juan Basin Area Agency on Aging

Estimated number of persons without health insurance – 4,619, 8.4% [ACS 2015-2019 US Census Bureau]

Demographics

Population – Between 2010 and 2019, La Plata County grew from 51,441 to 56,272 people, with most of the growth occurring in Bayfield and Durango. Ignacio saw slower growth, as did unincorporated areas of the county. These population figures, however, do not reflect the large number of seasonal visitors, many of whom own 2nd homes in the county.

	2010	2019	Ann. Avg % Change 2010-19
La Plata	51,441	56,272	1.0%
Bayfield	2,357	2,708	1.6%
Durango	16,901	19,117	1.4%
Ignacio	699	718	0.3%
Unincorporated	31,484	33,729	0.8%

Source: Colorado State Demography Office

Population growth in the county was 37% natural causes (births and deaths), and 63% net migration. The population is expected to grow at a moderate rate through 2035.

Other pertinent demographics of La Plata County are provided by the American Community Survey (ACS 2018) <http://www.census.gov/acs/www/>. Median home price is from Local MLS (2019).

Median Age	39.9
Working from Home	8%
Median Household Income	\$ 64,372
Median Home Price	\$ 385,000
Homeownership	71%
Non-white Population	12%
Poverty Rate	9%
Bachelors Degree or Higher	44%

Snapshot of the Local Economy

Unemployment Rates

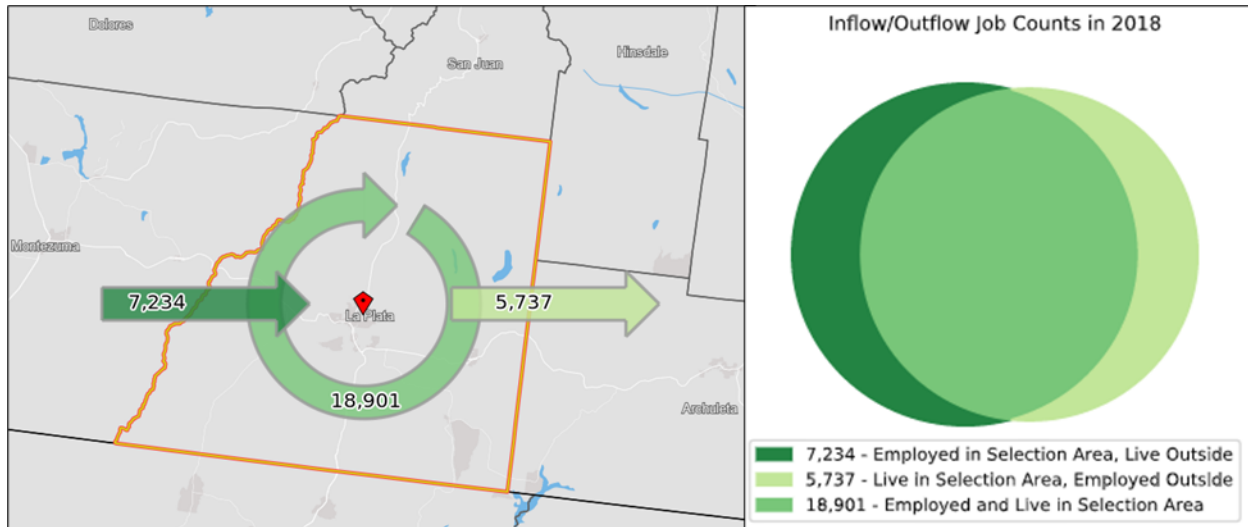
Unemployment Rates 2019				
Location	Labor Force	Employed	Unemployed	Unemployment Rate
USA				3.9%
Colorado				2.8%
Archuleta	6,937	6,717	220	3.2%
Dolores	1,164	1,129	35	3.0%
La Plata	32,305	31,495	810	2.5%
Montezuma	13,038	12,486	552	4.2%
San Juan	570	553	17	3.0%

Source: Colorado Labor Market CDLE-LMI

In 2019, county unemployment rates (2.5%) were lower than the state (2.8%) and less than the nation (3.9%).

Commuting

People commute to where the jobs are but take their paychecks home. This influences how we evaluate employment, whether by place of work or by residence. In 2018 (latest available) most of the workers commuting out of the county for jobs are going to San Juan County, NM (2.1%). Most of the workers commuting into La Plata County for jobs are also from San Juan County, NM (2.1%). It is notable that more people are commuting in for work than commuting out. La Plata County, specifically Durango, is the regional work center.



Jobs Counts by Places (Cities, CDPs, etc.) Where Workers are Employed - All Jobs 2018			Jobs Counts by Places (Cities, CDPs, etc.) Where Workers Live - All Jobs 2018		
	Count	Share		Count	Share
All Places (Cities, CDPs, etc.)	24,638	100.0%	All Places (Cities, CDPs, etc.)	26,135	100.0%
Durango city, CO	12,966	52.6%	Durango city, CO	6,915	26.5%
Bayfield town, CO	740	3.0%	Bayfield town, CO	821	3.1%
Farmington city, NM	526	2.1%	Farmington city, NM	542	2.1%
Ignacio town, CO	400	1.6%	Cortez city, CO	307	1.2%
Denver city, CO	392	1.6%	Denver city, CO	253	1.0%
Cortez city, CO	367	1.5%	Aztec city, NM	241	0.9%
Grand Junction city, CO	338	1.4%	Colorado Springs city, CO	206	0.8%
Colorado Springs city, CO	201	0.8%	Ignacio town, CO	201	0.8%
Pagosa Springs town, CO	130	0.5%	Montrose city, CO	126	0.5%
Montrose city, CO	128	0.5%	Mancos town, CO	125	0.5%
All Other Locations	8,450	34.3%	All Other Locations	16,398	62.7%

Area Name	County	¹ Resident Population	² All Workers	² Workers Living in Area	³ Daytime Population	⁴ Daily Commuter Population
Bayfield	La Plata	2,722	1,046	940	2,828	106
Durango	La Plata	19,114	17,546	8,875	27,785	8,671
Ignacio	La Plata	721	584	287	1,018	297

Data: ¹Co State Demographer 2018; ²On the Map Census 2018;

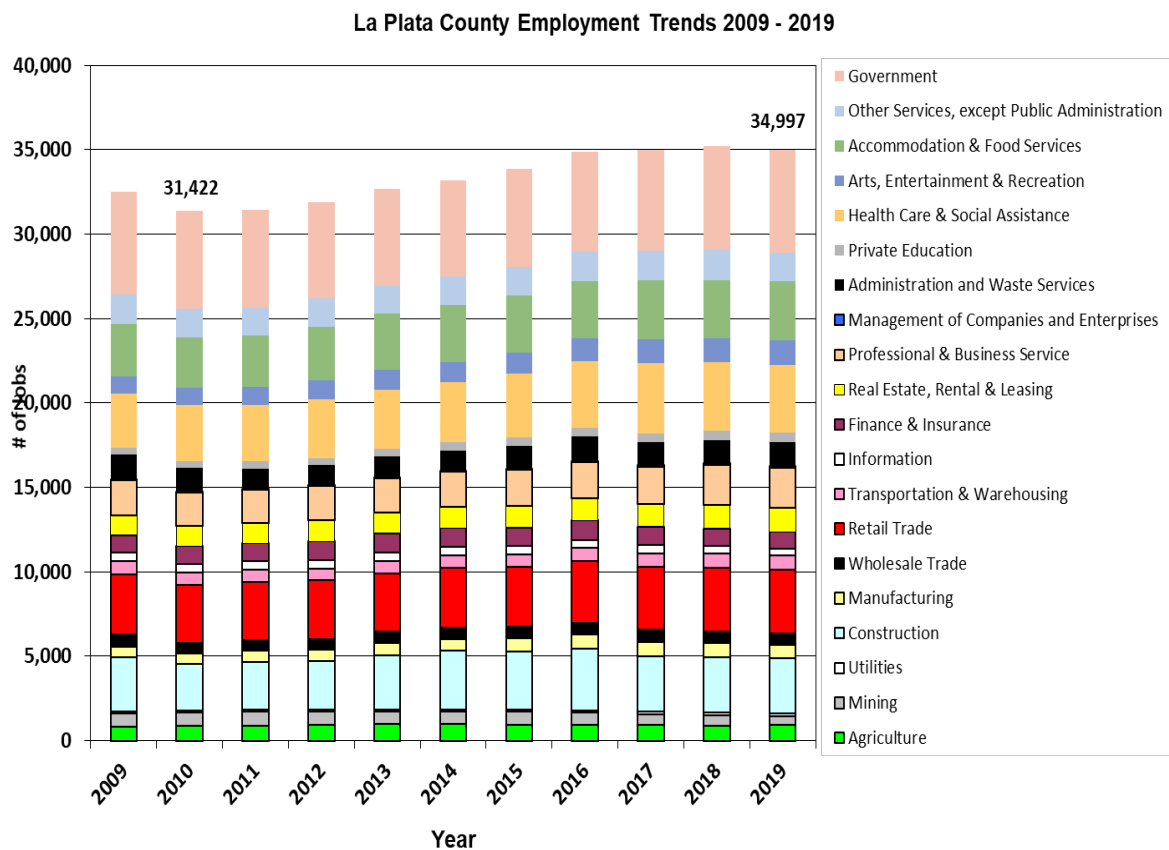
³ Daytime Population = (Resident Population + All Workers) - Workers Living in Area

⁴ Daily Commuter Population = Daytime Population - Resident Population

Employment Sector Trends 2009 - 2019

An employment “sector” groups jobs into categories that are alike and allows us to measure the relative strength of that industry in the local economy. Using “trend analysis” we can see how those industries have grown or declined within a specific timeframe. The following chart includes wage earners as well as proprietors (owners). Total employment refers to the numbers and types of jobs reported by place of work – which may be outside of the county, or even the state. This data is provided by the Bureau of Economic Analysis, then is adjusted, and reported by the Colorado State Demographer. It lags two years behind the current year, thus 2019 is the latest available data.

This chart demonstrates fluctuating job numbers from 2009 to 2019. During that time 2009 was a strong year for job growth but declined to a low point in 2010 (31,422 jobs) – the depth of the recession in the local area. Services, Government and Retail sectors have accounted for the largest proportion of the jobs in La Plata County since 2009.



2019 Employment

Proprietors (owners) make up 21% of total employment, while wage and salary jobs account for 79%. Declines in the construction and mining sectors from 2014 to 2019 reflect downturns in the oil and gas industry. Growth in Health Services is expected to continue as the Baby Boomer population ages.

Wages and employment are highly dependent on service sector jobs (43% of employment). The service sector, which includes the eight highlighted field in the table below, is composed of many types of jobs and very different wage scales. These include highly paid professionals as well as entry-level wage earners. Government jobs provide 17% of employment and relatively high wages, especially Federal jobs.

Data on employment and earnings in agriculture is unusually difficult to obtain for several reasons. First, agricultural producers (farmers) are not required to report their employees under the Employment Security program. While some do, the reporting that does occur covers only a small fraction of the actual employment. Second, the industry includes large numbers of proprietor-operators (farmers) and their families, and there are no good estimates on the numbers of these that represent full-time workers. Finally, farm income fluctuates widely with market prices and changes in inventories. Thus, the income data are not necessarily an accurate measure of activity as they are in other industries.

La Plata County 2019 Total Employment	# of Jobs	% of Jobs	*Avg. ann. wage	# Jobs % Change 2014-2019
Agriculture	940	3%	\$ 34,173	-3%
Mining	531	2%	\$ 135,050	-29%
Utilities	140	0.4%	\$ 90,840	-2%
Construction	3,253	9%	\$ 53,939	-6%
Manufacturing	824	2%	\$ 44,105	14%
Wholesale Trade	674	2%	\$ 57,579	-1%
Retail Trade	3,742	11%	\$ 31,569	6%
Transportation & Warehousing	846	2%	\$ 62,526	19%
Information	425	1%	\$ 112,678	-16%
Finance Activities	992	3%	\$ 90,980	-11%
Real Estate	1,438	4%	\$ 45,633	15%
Professional & Business Services	2,361	7%	\$ 69,285	14%
Management of Companies and Enterprises	136	0.4%	\$ 100,474	147%
Administration and Waste Management	1,390	4%	\$ 33,943	14%
Private Education	583	2%	\$ 44,158	25%
Health Services	3,971	11%	\$ 51,249	11%
Arts, Entertainment, and Recreation	1,468	4%	\$ 22,482	26%
Accommodation and Food	3,524	10%	\$ 21,462	4%
Other Services, except Public Administration	1,645	5%	\$ 32,332	-3%
Government	6,114	17%	\$ 52,675	7%
Total	34,997	100%	\$ 47,936	5%

*Quarterly Census of Employment & Wages (QCEW)

Source: Colorado State Demography Office

2019 Employment Share by Wage - 34,994 Jobs

Avg. Annual Wage	Low Wage	Mid Wage	High Wage	Livable Wage
\$47,936	< \$38,349	\$38,350 - \$57,523	> \$57,524	\$68,120
	36%	47%	17%	13%

Low Wage < 80% of AAW; Mid Wage > 80% and < 120% of AAW; High Wage > 120% of AAW
Livable Wage for two working adults with two children (MIT)

Economic Base Analysis

Economic Base Analysis is a tool to describe economic activity by the source of revenue, whether the money generated by sales comes from outside the local economy, or from within the local economy. This type of analysis is designed to define those economic activities that drive or sustain the local economy. Base Analysis distinguishes which industries and factors are responsible for overall growth and change. There are two types of regional industries:

Base industries produce exports or derive their sales or income *directly* from outside sources, or *indirectly* by providing supplies to export industries. These activities **bring in outside dollars** to circulate within the local economy. These industries include agriculture, mining, manufacturing, national and regional services, state and federal government jobs, and tourism. Another base industry is created by households that spend money earned elsewhere. For example, a retiree whose income comes from outside of the county is supporting many traditional local resident services jobs; however, since their income is basic (from outside the local economy), the local resident service jobs are also considered basic.

La Plata 2019 Base Industries	# of Jobs	% of Jobs
Agribusiness	1,593	7%
Mining	606	3%
Manufacturing	250	1%
Government	2,448	11%
Regional Services	4,300	20%
Tourism	6,434	30%
Households	6,136	28%
Total	21,767	100%

In La Plata County the largest base employment industries are tourism (30%) and households (28%) that spend money earned elsewhere (i.e., retirees).

Local resident services provide services to residents and **re-circulate dollars** within the local economy. Resident services include industries that take care of the local community, such as health services, education, and employment at the local grocery store. Outside money enters the local economy through a variety of sources, circulates through the local area, and then leaves the local economy when we purchase goods or services from outside the area, or pay federal and state taxes. Looking at restaurants for example, when the person buying a meal is from outside the area (a tourist), it is a **direct base economic activity** and when the person is a resident using money earned in the local economy, it is a **local resident service activity**. so, restaurants are both direct based and a local resident service.

Enterprise Zones – Region 9 administers the Southwest Colorado Enterprise Zone. Nineteen of the 33 census blocks in the county are designated Enterprise Zones.

Opportunity Zones – Census Tracts 9404 and 9711 are eligible in La Plata County.

More detailed information regarding La Plata County is available at www.region9edd.org.

Per Capita Income

In 2019, La Plata had a per capita personal income (PCPI) of \$58,216. This PCPI ranked 17th in the state and was 95 percent of the state average, \$61,157, and 103 percent of the national average, \$56,490.

Per Capita Income 2019		
	PCI 2019	% of USA
USA	\$ 56,490	100%
Colorado	\$ 61,157	108%
La Plata	\$ 58,216	103%

Source: Bureau of Economic Analysis

Total Personal Income

La Plata 2019 Total Personal Income (\$000)		% of Total
Employment Earnings	\$ 1,732,488	53%
Residency Adjustment	\$ (32,296)	-1%
Dividends, Interest & Rent	\$ 1,096,833	34%
Transfer Payments	\$ 443,623	14%
Estimated TPI	\$ 3,240,648	100%


Source: Bureau of Economic Analysis


In 2019, La Plata had a total personal income (TPI) of \$3,240,648,000. This personal income ranked 15th in the state and accounted for 0.9 percent of the state total.


Estimated payments to retirees accounted for about 9% of the estimated TPI in La Plata County in 2019. That was \$286,477,000.


Total Personal Income Trends 1970 - 2019

In addition to employment income, money enters the local economy from other sources. Total Personal Income (TPI) is the sum of all personal income that flows into the county. The following chart examines the components of TPI and how the proportions of this income have changed over time.

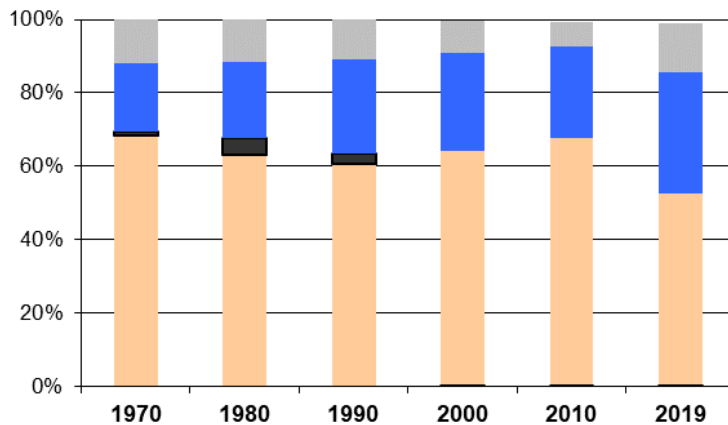
 Transfer payments consist primarily of retirement and disability benefit payments, medical payments (i.e., Medicare and Medicaid), income maintenance benefits, unemployment insurance, veteran's benefits, and payments to nonprofit institutions.

 Dividend income is income that is paid in cash or other assets to stockholders by corporations in the U.S. or abroad. Interest income consists of monies received from money market mutual funds and interest from other sources. Rental income consists of income from the rental of real property, the net income of owner - occupants of non-farm dwellings, and the royalties received from patents, copyrights, and from the rights to natural resources.

 Residency adjustments are made when a person receives income for work performed and paid for from outside their place of residency, (i.e., commuters). Negative numbers mean that more people were coming into the county for work than were commuting out.

 Earnings are derived by place of work, including farm and non-farm earnings. Less Social Security contributions.

La Plata County - Total Personal Income Trends
1970 - 2019



Generally, from 1970 to 2019, we see trends of decreasing employment income, and increasing income from dividends, interest and rent, and transfer payments. Residency adjustments illustrate how the economy of each county is tied to others as people commute to where the jobs are but take their paychecks home.

COMMUNITY DEVELOPMENT ACTION PLAN

The *Community Development Action Plan* (CDAP) is a list of short-term projects (**defined as two years or less**). Initial drafts of the CDAPs are developed through review of current projects, planning documents, small group discussions and interviews with community stakeholders, and those working on community projects. The CDAPs are presented at various community and public meetings and distributed for public comment for a period of one month. The final drafts are presented to each county's Board of Commissioners for approval. The approved copies are included as part of this document. The CDAPs are useful tools for organizations working with communities and have evolved into being the central source for listing the full range of projects that are in process or are desired. The CDAPs are used as the official community plan required for eligibility for many federal and state funding sources.

The 2021 La Plata County CDAP has a total of 63 projects that were developed by stakeholders and subsequently approved by the County Commissioners on September 14, 2021, signed by Marsha Porter-Norton – Chairwoman.

Recognizing that the COVID pandemic will impact the economy for years to come, this CEDS focuses on aligning regional strategies with state strategies for addressing equitable and resilient economic growth.

The CDAP projects were aligned with the [State Rural Economic Blueprint](#). Priorities from the State Blueprint are assigned to specific projects in the CDAP. Priorities are numbered below for reference rather than level of importance.

1. **Leverage the Unique Assets of Rural Colorado**
2. **Save Coloradoans Money on Healthcare**
3. **Fulfill Every Child's Potential**
4. **Support Local Community Success in Energy Transmission**
5. **Make Critical Investment in Community Infrastructure**
6. **Invest in Roads and Bridges**
7. **Build on Successful Economic Development Programs**
8. **Community Identified Priorities – this was added for projects aligned more closely with local economic priorities**

The CDAP projects were also linked to six resiliency strategies identified in the [Colorado Resiliency Framework](#), which addresses potential and interrelated economic, social, and environmental risks and vulnerabilities. Abbreviations are listed next to the strategies in the CDAP along with a number representing the supporting strategy. Please refer to the Colorado Resiliency Framework document for details.

1. **Future Ready Economy & Workforce (EW)**
2. **Climate & Natural Hazard Resiliency (CN)**
3. **Building & Infrastructure Sustainability (BI)**
4. **Agriculture & Food Security (AF)**
5. **Housing Attainability (HA)**
6. **Community Capacity (CC)**
7. **Internal to Community (IC) - this was added for projects aligned more closely with local resiliency strategies**

Currently, the CDAP list displays: Project #, Rank, Category, State Economic Development Priority, Resiliency Linkage, Primary Partners, Funding Resources, Cost Estimate, Jobs and Outcomes & Impacts.

CDAP Project Ranking

Ranking Criteria

- Is relevant to economic or community development – aligns with community master plans and priorities or state economic priorities.
- Is relevant to economic or community resiliency – aligns with state resiliency framework.
- Is within the community's and primary partners ability to influence.
- Metrics address progress and impact.
- Metrics are comparable to other counties, regions, state.
- Data is readily available and accessible to community members.

Rank		
High	Medium	Low
Must meet at least 4 criteria	Must meet at least 3 criteria	Must meet at least 2 criteria

Guidelines for CDAP Review & Project Additions

Region 9 updates and monitors the Community Development Action Plans (CDAPs) for Archuleta, Dolores, La Plata, Montezuma and San Juan Counties in an ongoing cycle every two years. County Commissioners may update their CDAP at any time and provide the update to Region 9. If a project is submitted out of cycle due to timing or grant applications, the project must have the support of that County's Commissioner and can be added as an addendum.

Criteria for Adding CDAP Projects out of Cycle:

Is the proposed project required to be part of a community plan?

Is project happening before next CDAP revision?

Does project fit a CDAP definition?

CDAP #	Project	Rank
1	Plan Bayfield 2018	High
2	Downtown Bayfield	High
5	Complete Fox Farm Village in Bayfield	High
9	City of Durango Strategic Plan 2021	High
10	Affordability & Economic Opportunity	High
11	Diversity, Equity Inclusion	High
12	Enhanced Livability & Sense of Place	High
13	Environmental & Social Sustainability	High
14	Financial Excellence & Transparency	High
15	Mobility: Accessibility, Transit, Transportation System	High
16	Sanitation: water, sewer, stormwater, solid waste, recycling	High
17	Aviation	High
18	Asset Management and Facility Needs	High
19	US 160 West Diamond Grind- 21750	High
21	Town of Ignacio Strategic Plan 2021-2023	High
22	Downtown Community Revitalization & Business Development	High
23	Community Engagement & Collaboration	High
24	Affordable & Attainable Housing Development for Families & Workforce	High

CDAP #	Project	Rank
26	Improved Infrastructure with Future Vision & Planning	High
27	Manageable Utility Rates through Independence or Adjustment	High
28	SH 172 at County Road 318- 21015	High
29	La Plata County Comprehensive Plan 2017	High
31	Implement initiatives that encourage the appropriate use, development and responsible management of natural resources including protection, preservation, and restoration.	High
32	Re-write Chapter 90 of the County Code (Natural Resources)	High
37	Revitalization of the Regional Housing Alliance to address workforce housing	High
38	Extension of sewer service to La Posta area in support of commercial and residential development	High
43	Emergency Watershed Protection Program - Removed as Completed	High
44	Construct Search & Rescue Building - Removed as Completed	High
45	Pursue mitigation efforts to protect the Wildland Urban Interface	High
48	Rural High-Speed Connections & Fiber	High
51	Southwest Colorado US 550-US 160 Connection South Design-Build Project	High
52	US 550 intersection and pedestrian improvements from 9th Street to 12th Street in Durango	High
53	US 160 and CR 225 intersection improvements (roundabout and safety improvements)	High
54	US 160 Elmore's East improvements including widening, access improvements, and wildlife mitigation	High
55	US 160 Dry Creek improvements including widening, new structures, realignment of CR 223, shoulder widening, and access consolidation	High
56	US 160 safety and mobility improvements including passing lanes, turn lanes, shoulders, and wildlife mitigation from CR 225 to Dry Creek	High
57	Outrider stops and shelter improvements in Durango, Mancos, Cortez, Dolores, and Rico	High
58	Outrider bus service between Durango and Pagosa Springs	High
59	Outrider bus service between Durango and Dove Creek	High
60	Durango Transit Zone 7 route expansions from city limits to Durango/La Plata County Airport, Hermosa, Durango West, Hesperus, and Edgemont	High
61	Southern Ute Indian Tribe CEDS 2018-2022	High
62	LPC - Durango Strategic Plan on Homelessness 2020	High
63	Homegrown Talent Initiative-Durango High School	High
64	Implement Bond Measures for Durango Schools Infrastructure Improvements	High
65	Facilities assessment for highest and best use of underutilized county properties.	High
3	Major Employer with Primary Jobs in Bayfield	Med
6	Improve Storm Drainage in Bayfield	Med
7	Fiber Optic Backbone in Town of Bayfield	Med
20	US 550 and 30th Street Durango	Med
25	Stable & Effective Organizational Leadership	Med
33	Implement food systems planning and coordination at the food system and community level.	Med
34	Expand Mercy Regional Medical Center Heart & Vascular Care	Med

CDAP #	Project	Rank
35	Expand Mercy Regional Telemedicine Service	Med
36	Stabilization and preservation of the Old Main Post Office	Med
39	Secure funding for upgrades for County roads experiencing increased traffic	Med
40	Support Special Districts in meeting service requirements within their defined service areas.	Med
41	Service extension to serve "Economic Development Areas" as defined in the Land Use Code.	Med
42	Create Rural Water System for West Side of County	Med
46	Forest Health, Water and Wildfire Risks	Med
47	Develop Durango Mesa Park phase 1	Med
49	Add Airline Flight(s) & Round-Trip Routes at Durango-La Plata County Airport	Med
50	Continue Capital improvements to Durango/ La Plata County Airport	Med
4	Recruit National Chain Retail Stores to Bayfield	Low
8	Construct Intersections for Bayfield Parkway/US 160 East & West of Bayfield	Low
30	Infrastructure development for support of the designation of an "Economic Development Area" in proximity of the airport.	Low

CDAP #	Project	Rank	Category	State Economic Development Priority	Resiliency Linkage	Partners	Funding Resources	Cost Estimate	Jobs	Outcomes & Impacts
1	Plan Bayfield 2018	High	Town Comprehensive Plan	Community Identified Priorities	Internal to Community	Outlined per the Bayfield Plan	Outlined per the Bayfield Plan	Outlined per the Bayfield Plan	Outlined per the Bayfield Plan	Outlined per the Bayfield Plan
2	Downtown Bayfield	High	Business Development	Make Critical Investment in Community Infrastructure	Building and Infrastructure Sustainability (BI1, BI5)	Town of Bayfield Downtown Business Association DoLA Bayfield Farmers' Market	State Historical Funds Bayfield DoLA Colorado Main St. Program Bayfield Chamber USDA – Business & Industry loans Downtown Colorado Inc.	Year 1, \$75K grant (\$25K local match) Year 2, \$50K grant \$50K local	1 part-time coordinator	Complete Bayfield Priorities in Downtown Colorado Inc. Plan: 1) Complete branding effort for community. 2) Implement Downtown Colorado Inc. priority recommendations. 3) Comprehensive street and sidewalk renewal. 4) Beautification projects on Mill Street including signage, historic plaques, benches, and trash containers. 5) Increase amenities for tourism. 6) Improved appearance and pedestrian safety throughout business district.
3	Major Employer with Primary Jobs in Bayfield	Med	Business Development	Make Critical Investment in Community Infrastructure	Future Ready Economy & Workforce (EW1, EW4)	Town of Bayfield La Plata County La Plata Economic Alliance Region 9 EDD	Region 9 EDD State & federal funding /incentives DoLA Bayfield OEDIT	N/A	N/A	Pursue major employer for Bayfield 1) Identify prospective employers, explore potential sites, and structure favorable leases 2) Provide broadband access.
4	Recruit National Chain Retail Stores to Bayfield	Low	Business Development	Make Critical Investment in Community Infrastructure	Future Ready Economy & Workforce (EW4)	Town of Bayfield Region 9 EDD Bayfield Chamber Area businesses	Bayfield Alliance State & federal funding sources/ incentivees CDOT Private Landowner	N/A	N/A	Recruit National Chain Retail Stores to Bayfield 1) Increase Town tax revenue and address substantial source of retail marketing leakage. 2) Hire retail consulting firm. 3) Explore potential sites and structure favorable leases.

CDAP #	Project	Rank	Category	State Economic Development Priority	Resiliency Linkage	Partners	Funding Resources	Cost Estimate	Jobs	Outcomes & Impacts
5	Complete Fox Farm Village in Bayfield	High	Housing	Make Critical Investment in Community Infrastructure	Housing At-tainability (HA)	Habitat for Humanity of La Plata County Town of Bayfield	Colorado Dept. of Housing DoLA Habitat ReStore and donations	@\$720K per 4 units		Complete final 18 homes for project at the rate of 2 to 4 units (duplex) a year. Meet workforce housing needs.
6	Improve Storm Drainage in Bayfield	Med	Public Infrastructure	Make Critical Investment in Community Infrastructure	Climate & Natural Hazard Resiliency (CN2, CN4)	Town of Bayfield	Bayfield FEMA CWCBC DoLA	\$1M	Design & construction jobs	Complete improvements identified in the Master Drainage Plan.
7	Fiber Optic Backbone in Town of Bayfield	Med	Telecommunications	Make Critical Investment in Community Infrastructure	Future Ready Economy & Workforce (EW1)	Town of Bayfield Southwest Colorado Council of Governments	Fiber internet companies' Wireless internet companies Bayfield DoLA	N/A	N/A	Enhance the Fiber Optic Backbone in Town of Bayfield 1) Acquire 100% high speed internet coverage. 2) Ensure 100 Mbps available for businesses.
8	Construct Intersections for Bayfield Parkway/US 160 East & West of Bayfield	Low	Transportation	Invest in Roads & Bridges	Building & Infrastructure Sustainability (BI1)	Town of Bayfield County CDOT	CDOT Bayfield	N/A	Construction jobs retained	Develop Bayfield Parkway and US 160 east side intersection. Bayfield, County, and CDOT have IGA Access Control Plan.
9	City of Durango Strategic Plan 2021	High	City Strategic Plan	Community Identified Priorities	Internal to Community	Outlined per the Durango Plan	Outlined per the Durango Plan	Outlined per the Durango Plan	Outlined per the Durango Plan	Outlined per the Durango Plan

CDAP #	Project	Rank	Category	State Economic Development Priority	Resiliency Linkage	Partners	Funding Resources	Cost Estimate	Jobs	Outcomes & Impacts
10	Affordability & Economic Opportunity	High	Affordability & Economic Opportunity	Make Critical Investment in Community Infrastructure	Housing Attainability (HA1, HA2)	Axis Health Systems City of Durango Community Compassion Outreach (CCO) La Plata County Durango Business Improvement District (BID) Durango Chamber of Commerce Durango Urban Renewal Authority Homesfund Mercy Regional Medical Center Neighbors in Need Alliance (NINA) Region 9 Economic Development Regional Housing Authority San Juan Basin Health Small Business Development Center of SW Colorado (SBDC)	Outlined per the Durango Plan	Outlined per the Durango Plan	Outlined per the Durango Plan	1) Create housing to enhance multigenerational community workforce, as well as attainable and affordable housing overall 2) Expand economic development opportunities with regional stakeholders 3) Provide job opportunities for the community 4) Address homelessness for the community * For the purpose of conserving space in this document, see City of Durango Strategic Plan 2021-2023 for project details and metrics.

CDAP #	Project	Rank	Category	State Economic Development Priority	Resiliency Linkage	Partners	Funding Resources	Cost Estimate	Jobs	Outcomes & Impacts
11	Diversity, Equity Inclusion	High	Diversity, Equity Inclusion	Community Identified Priorities	Community Capacity (CC1)	City of Durango Community stakeholders	Outlined per the Durango Plan	Outlined per the Durango Plan	Outlined per the Durango Plan	1) Foster strong partnerships with community groups 2) Improve external communication for inclusivity 3) Develop systems that are internal to the city organization and workforce * For the purpose of conserving space in this document, see City of Durango Strategic Plan 2021-2023 for project details and metrics.
12	Enhanced Livability & Sense of Place	High	Enhanced Livability & Sense of Place	Community Identified Priorities	Internal to Community	City of Durango La Plata County Axis Mental Health System Southwest Auto Theft Taskforce Manna Navigation Center Durango Creative District Community stakeholders	Outlined per the Durango Plan	Outlined per the Durango Plan	Outlined per the Durango Plan	1) Safety: police, fire, emergency services (support, strengthen, enhance) 2) Improve financial viability of amenities including Durango Public Library, Parks and Recreation and work of Creative Economy Commission 3) Identifying an iconic feature (physical structure or activity) that becomes a symbol of Durango physical structure or arts center * For the purpose of conserving space in this document, see City of Durango Strategic Plan 2021-2023 for project details and metrics.

CDAP #	Project	Rank	Category	State Economic Development Priority	Resiliency Linkage	Partners	Funding Resources	Cost Estimate	Jobs	Outcomes & Impacts
13	Environmental & Social Sustainability	High	Environmental & Social Sustainability	Community Identified Priorities	Internal to Community	City of Durango La Plata County State of Colorado Community stakeholders	Outlined per the Durango Plan	Outlined per the Durango Plan	Outlined per the Plan	1) Reduce the city's carbon footprint 2) Increase availability of renewable energy 3) Improve quality of natural resources 4) Social sustainability * For the purpose of conserving space in this document, see City of Durango Strategic Plan 2021-2023 for project details and metrics.
14	Financial Excellence & Transparency	High	Financial Excellence & Transparency	Make Critical Investment in Community Infrastructure	Building and Infrastructure Sustainability (BI4)	City of Durango	Outlined per the Durango Plan	Outlined per the Durango Plan	Outlined per the Durango Plan	1) Financial sustainability 2) Transparency & public trust 3) Accountability 4) Set standards for sound, effective, trained governance * For the purpose of conserving space in this document, see City of Durango Strategic Plan 2021-2023 for project details and metrics.

CDAP #	Project	Rank	Category	State Economic Development Priority	Resiliency Linkage	Partners	Funding Resources	Cost Estimate	Jobs	Outcomes & Impacts
15	Mobility: Accessibility, Transit, TransportationSystem	High	Infrastructure Network	Invest in Roads & Bridges	Building and Infrastructure Sustainability (BI1)	City of Durango La Plata County CDOT Community stakeholders	Outlined per the Durango Plan	Outlined per the Durango Plan	Outlined per the Durango Plan	<p>Improve safety and connectivity for all modes of transportation Integrate Parking into Transportation Demand Management Program Identify long term funding options for transit operations Advance community accessibility and walkability City hard surface trail development in accordance with the following standards to ensure accessibility: Durango Land Use and Development Code Article 4-2-3-3, Durango Multi-Use Trail Standards, AASHTO Guide for the Development of Bicycle Facilities</p> <p>* For the purpose of conserving space in this document, see City of Durango Strategic Plan 2021-2023 for project details and metrics.</p>

CDAP #	Project	Rank	Category	State Economic Development Priority	Resiliency Linkage	Partners	Funding Resources	Cost Estimate	Jobs	Outcomes & Impacts
16	Sanitation: water, sewer, stormwater, solid waste, recycling	High	Infrastructure Network	Invest in Roads & Bridges	Building and Infrastructure Sustainability (BI1)	City of Durango La Plata County Local / regional trash & recycling services Community stakeholders	Outlined per the Durango Plan	Outlined per the Durango Plan	Outlined per the Durango Plan	Water: Progress with development of water treatment capabilities 1) Baseline established by Water Master Plan in 2021 Stormwater: Adopt Stormwater Management Plan 2) Plan Construct 32nd Street Extended Detention Basin 3) Review costs, needed improvements and options for providing waste/recycling service 4) Improve aging wastewater pipes through rehabilitation 5) Address 5000 LF in 2021 Develop performance indicator score card for water and wastewater operations 6) Complete Recyclable Materials RFP 7) Complete Trash and Recycle Rate study 8) Continue to engage and educate the community on proper recycling practices and explore opportunities for expanded recycling options in order to minimize contamination of the recycling stream and improve Durango's rate of diversion from the landfill.

CDAP #	Project	Rank	Category	State Economic Development Priority	Resiliency Linkage	Partners	Funding Resources	Cost Estimate	Jobs	Outcomes & Impacts
17	Aviation	High	Infrastructure Network	Community Identified Priorities	Internal to Community	City of Durango La Plata County FAA Community stakeholders	Outlined per the Durango Plan	Outlined per the Durango Plan	Outlined per the Durango Plan	Operate and maintain airport facilities in a safe, efficient, and sustainable manner to support all forms of aviation services. Work with the airlines to maintain and expand the commercial air service route network in order to promote a competitive airline environment and deliver high levels of service to the community. Implement Airport Master Plan. * For the purpose of conserving space in this document, see City of Durango Strategic Plan 2021-2023 for project details and metrics.
18	Asset Management and Facility Needs	High	Infrastructure Network	Community Identified Priorities	Internal to Community	City of Durango Community stakeholders	Outlined per the Durango Plan	Outlined per the Durango Plan	Outlined per the Durango Plan	Core services every city needs to provide these types of services efficiently and effectively and be held accountable for their impact. 1) By 2021 Develop a baseline in for the rate of availability for utility services (water, and sewer systems) 2) Percent of City-maintained roads rated as "Good," "Very Good," or "Excellent" at 60% 3) Complete Facilities Assessment by 4th quarter 2021

CDAP #	Project	Rank	Category	State Economic Development Priority	Resiliency Linkage	Partners	Funding Resources	Cost Estimate	Jobs	Outcomes & Impacts
19	US 160 West Diamond Grind-21750	High	Transportation	Invest in Roads & Bridges	Building & Infrastructure Sustainability (BI1)	CDOT SW Regional Transportation Planning Region (SWTPR) Regional Transit Coordinating Council Area governmentsSWC-COG	CDOT SUR	\$5M	Construction Jobs	This project is located on US 160 between approximate MP 37 to 40, in the City of Cortez in Montezuma County and US 160 West of the Durango Tech Center Drive. The project is a combination of ADA improvements and a diamond grind/surface rehab. 1) Milling and grinding the surface of the roadway, manhole improvements and new striping This project began in Durango on May 3rd and should be complete by September 2021.

CDAP #	Project	Rank	Category	State Economic Development Priority	Resiliency Linkage	Partners	Funding Resources	Cost Estimate	Jobs	Outcomes & Impacts
20	US 550 and 30th Street Durango	Med	Transportation	Invest in Roads & Bridges	Building & Infrastructure Sustainability (BI2)	CDOT SW Regional Transportation Planning Region (SWTPR) Regional Transit Coordinating Council Area governmentsSWC-COG	MMOF	~\$195,000	Construction Jobs	<p>This project will be located on US 550, North Main Avenue, in the City of Durango in La Plata County. This project will address the lack of safe pedestrian crossings and transit stop accessibility in the North Main corridor.</p> <p>1) Pedestrian crossing between 29th and 30th Streets, at the south side of Birds restaurant near the egress.</p> <p>2) Crosswalk, ADA curb ramps, a pedestrian refuge island and a Rectangular Rapid Flashing Beacon (RRFB)</p> <p>The City of Durango and CDOT are working together to get an IGA in place for funding, and design is moving forward. Ad and construction dates are possible in CY 2021</p>
21	Town of Ignacio Strategic Plan 2021-2023	High	Town Comprehensive Plan	Community Identified Priorities	Internal to Community	Outlined per the Ignacio Plan	Outlined per the Ignacio Plan	Outlined per the Ignacio Plan	Outlined per the Ignacio Plan	Outlined per the Ignacio Plan

CDAP #	Project	Rank	Category	State Economic Development Priority	Resiliency Linkage	Partners	Funding Resources	Cost Estimate	Jobs	Outcomes & Impacts
22	Downtown Community Revitalization & Business Development A. Overall B. Revitalization & Beautification: Attracting Visitors & Residents C. Attracting Businesses & Increasing Jobs D. Promote Community Gathering	High	Business Development	Build on Current Successful Economic Development Programs	Future Ready Workforce & Economy (EW3) Community Capacity (CC2, CC3)	Ignacio Creative District Ignacio Chamber of Commerce ELHI Ignacio School District SUIT La Plata Economic Development Alliance Southwest Colorado Accelerator Program for Entrepreneurs SWCO Small Business Development Center & FLC Innovation Center Region 9 Local Religious Organizations SOCOCA				Outlined per the Ignacio Plan
23	Community Engagement & Collaboration A. Community Relations & Engagement B. Tribal Collaborations	High	Community Engagement	Community Identified Priorities	Community Capacity (CC2)	Town Boards & Commissions ELHI Ignacio School District SUIT				Outlined per the Ignacio Plan

CDAP #	Project	Rank	Category	State Economic Development Priority	Resiliency Linkage	Partners	Funding Resources	Cost Estimate	Jobs	Outcomes & Impacts
24	Affordable & Attainable Housing Development for Families & Workforce	High	Housing	Make Critical Investment in Community Infrastructure	Housing Attainability (HA1, HA2, HA3)	Regional Housing Authority HomesFunds Housing Solutions Ignacio School District DOLA/DOH USDA SUIT La Plata Economic Development Alliance The Durango Herald USDA				Outlined per the Ignacio Plan
25	Stable & Effective Organizational Leadership A. Permanent Town Manager B. Staff Training and Retention C. Electeds - Board Training, Development and Effective Meeting Execution	Med	Organizational Leadership	Community Identified Priorities	Community Capacity (CC1, CC2, CC3)	Town of Ignacio Key Staff Colorado Municipal League (CML) CO Interagency Risk Sharing Association (CIRSA)				Outlined per the Ignacio Plan

CDAP #	Project	Rank	Category	State Economic Development Priority	Resiliency Linkage	Partners	Funding Resources	Cost Estimate	Jobs	Outcomes & Impacts
26	Improved Infrastructure with Future Vision & Planning A. Water & Wastewater Treatment Facilities B. Broadband/Fiber Internet C. Land Use Development Plan (LUDC) D. Comprehensive Plan for the future E. Town Facilities F. Streets & Sidewalks Plan G. Parks, Open Space, Trails & Recreation H. Investments & Funding	High	Public Infrastructure	Make Critical Investment in Community Infrastructure Leverage the Unique Assets of Rural Colorado Build on Successful Economic Development Programs	Future Ready Workforce & Economy (EW1) Community Capacity (CC3)	SUIT CDOT ISD DOLA USDA GOCO CO State Trails Program & Committee SWCCOG				Outlined per the Ignacio Plan

CDAP #	Project	Rank	Category	State Economic Development Priority	Resiliency Linkage	Partners	Funding Resources	Cost Estimate	Jobs	Outcomes & Impacts
27	Manageable Utility Rates through Independence or Adjustment A. Water Loss B. Tribal Negotiations C. Independence through new Town Wastewater Facilities D. Treated Water Partnerships E. Community	High	Public Infrastructure	Make Critical Investment in Community Infrastructure	Climate & Natural Hazard Resiliency (CN4) Housing Attainability (HA4) Community Capacity (CC3)	LAPLAWD USDA DOLA Water & Power Authority SUUD - Renewable Energy Resources/ Divisionns				Outlined per the Ignacio Plan
28	SH 172 at County Road 318- 21015	High	Transportation	Invest in Roads & Bridges	Building & Infrastructure Sustainability (BI2)	CDOT Town of Ignacio La Plata County	FASTER	\$2.2M	Construction Jobs	1) Widening the existing roadway to provide room for a northbound left turn lane, and small concrete median between CR 318 and Shadow Spirit East 2) Earthwork is included along with electrical work to install intersection lighting 3) Install new signage and pavement markings This project will go to Ad in June and construction is tentative for late- summer 2021.
29	La Plata County Comprehensive Plan 2017	High	County Comprehensive Plan	Community Identified Priorities	Internal to Community	Outlined per the La Plata County Plan	Outlined per the La Plata County Plan	Outlined per the La Plata County Plan	Outlined per the La Plata County Plan	Outlined per the La Plata County Plan

CDAP #	Project	Rank	Category	State Economic Development Priority	Resiliency Linkage	Partners	Funding Resources	Cost Estimate	Jobs	Outcomes & Impacts
30	Infrastructure development for support of the designation of an "Economic Development Area" in proximity of the airport.	Low	Airports	Leverage the Unique Assets of Rural Colorado Make Critical Investment in Community Infrastructure	Climate & Natural Hazard Resiliency (CN1)	City of Durango, La Plata County, Economic Development Alliance, Private Developers				<p>The DRO Airport should sufficiently meet current and projected future needs of traveling public, persons and area businesses in a manner that is safe, economical, and environmentally sound.</p> <p>1) Continue to identify and promote the maintenance of infrastructure needs for the Airport throughout the County.</p> <p>2) Identify and inventory key roads and travel patterns used by the general public to access the airport from the City of Durango and surrounding areas.</p> <p>3) Develop planning strategies to identify appropriate land uses along the primary transportation corridors to, and around the airport.</p> <p>DRO and Animas Airpark should be encouraged to develop in a manner consistent with safety standards in their respective, adopted master plans.</p> <p>4) Continue to participate with updates to (both) the airports adopted master plans.</p>

CDAP #	Project	Rank	Category	State Economic Development Priority	Resiliency Linkage	Partners	Funding Resources	Cost Estimate	Jobs	Outcomes & Impacts
31	Implement initiatives that encourage the appropriate use, development and responsible management of natural resources including protection, preservation, and restoration.	High	Environmental Resources	Leverage the Unique Assets of Rural Colorado Support Local Community success in the energy transition	Climate & Natural Hazard Resiliency (CN2)	City of Durango, Town of Bayfield, Town of Ignacio, Animas La Plata Water Conservancy District, Multiple Special Districts				<p>Maintain or improve the quality of La Plata County's environmental resources including flora and fauna, water, air, visual resources, open lands, and open space while accommodating growth and development.</p> <p>1) Develop responsible methods, techniques, and tools relative to the environmental resource of water in La Plata County, while recognizing the need for adequate water to support growth.</p> <p>2) Develop responsible methods, techniques, and tools relative to the environmental resource of air in La Plata County.</p> <p>3) Encourage the creation of open space and promote development that identifies and accommodates natural resources, which can help to maintain visual resources important to La Plata County's quality of life and economy.</p> <p>4) Develop and maintain responsible methods, techniques, and tools relative to development and the County's environmental resources, recognizing the need to maintain sustainable populations of desired flora and fauna for recreational hunting, fishing, and wildlife viewing opportunities and</p>

CDAP #	Project	Rank	Category	State Economic Development Priority	Resiliency Linkage	Partners	Funding Resources	Cost Estimate	Jobs	Outcomes & Impacts
32	Re-write Chapter 90 of the County Code (Natural Resources)	High	Extractive Resources & Renewable Energy: Oil & Gas Development	Leverage the Unique Assets of Rural Colorado Support Local Community success in the energy transition	Building & Infrastructure Sustainability (BI4) Climate & Natural Hazard Resiliency (CN4) Community Capacity (CC3)	La Plata County, Energy Industry partners, Conservation Organizations, Health-Safety-Welfare partners, Landowners				Promote responsible oil and gas development while minimizing potential impacts to the environment and local residents. 1) Maintain and enhance cooperation with Local, State and Federal agencies; the oil and gas industry; and property owners with regard to regulating activity and mitigating impacts. 2) Protect the public health, safety and welfare of citizens while coordinating with fluid mineral extraction projects, within the limitations of local government powers and resources.

CDAP #	Project	Rank	Category	State Economic Development Priority	Resiliency Linkage	Partners	Funding Resources	Cost Estimate	Jobs	Outcomes & Impacts
33	Implement food systems planning and coordination at the food system and community level.	Med	Health & Human Services	Leverage the Unique Assets of Rural Colorado Build on Current Successful Economic Development Programs	Agriculture & Food Security (AF1, AF5)	The Good Food Collective CSU Extension Fort Lewis College Environmental Center San Juan Resource Conservation & Development Council The Healthy Community Food Systems Local First Cooking Matters of Southwestern Colorado The Garden Project of Southwest Colorado Bear Smart Durango Local farmers	USDA, Colorado Health Foundation	N/A	N/A	Awarded a 3-year USDA LFPP grant to reestablish and intact regional food system that drives economic development, workforce development, environmental stewardship, and social equity. Coordination of discrete segments of the food system (production, access, economy). Develop community workshops via the LocalFood, Local Places grant.
34	Expand Mercy Regional Medical Center Heart & Vascular Care	Med	Health & Human Services	Save Coloradoans Money on Healthcare	Internal to Community	Catholic Health Initiatives Mercy Regional Medical Center Mercy Cardiology	State funding Fundraising (in progress) Grants	\$4M	~20 construction jobs ~25 combination of FT & PT	1) Decrease travel and reduce window of time for critical treatment of heart conditions. 2) Improve medical cardio outcomes 3) Add specialized provider and support staff.

CDAP #	Project	Rank	Category	State Economic Development Priority	Resiliency Linkage	Partners	Funding Resources	Cost Estimate	Jobs	Outcomes & Impacts
35	Expand Mercy Regional Tele-medicine Service	Med	Health & Human Services	Save Coloradoans Money on Healthcare Make Critical Investments in Community Infrastructure	Climate & Natural Hazard Resiliency (CN4) Community Capacity (CC3)	Mercy Regional Medical Center Centura Catholic Health Initiatives Tele-communications/Internet Service Providers	Grants User charges Fast Track fiber runs by hospital site Region 9 EDD SWCCOG	N/A	6 (at least 2 FTE) in the neurological clinic in Durango	Continue to develop MMRC into the regional hub for tele-medical allowing high quality medical outreach in a large, rural, geographic area. 1) Grow network with major medical facilities to increase neurological services via telemedicine to supplant Durango clinic. 2) Create partnership with neurological medical providers by robotic device technology. 3) Provide trainings for medical personnel. 4) Provide telemedicine link between medical providers to increase and enhance access health care. 5) Build support network between SW Memorial, Cortez, and Mercy Regional Medical Center.

CDAP #	Project	Rank	Category	State Economic Development Priority	Resiliency Linkage	Partners	Funding Resources	Cost Estimate	Jobs	Outcomes & Impacts
36	Stabilization and preservation of the Old Main Post Office	Med	Historic Preservation	Leverage the Unique Assets of Rural Colorado Build on Current Successful Economic Development Programs	Building & Infrastructure Sustainability (BI5)	Potential public private partnership		N/A	N/A	Preserve places/structures which carry historic significance through programs, incentives, education, and other means; as well as perform ongoing identification, documentation, evaluation, protection, and interpretation of La Plata County's considerable historic and prehistoric cultural resources. 1) Encourage regular and applicable designation of historic resources within the La Plata County Historic Register. 2) Focus efforts of preservation through public education. 3) Strengthen the local and regional historic preservation network. 4) Promote the incorporation of historic preservation principles into land use planning, in order to accommodate heritage tourism and promote protection and/or restoration of historic resources.

CDAP #	Project	Rank	Category	State Economic Development Priority	Resiliency Linkage	Partners	Funding Resources	Cost Estimate	Jobs	Outcomes & Impacts
37	Revitalization of the Regional Housing Alliance to address workforce housing	High	Housing	Make Critical Investment in Community Infrastructure	Housing Attainability (HA1, HA2, HA3, HA4)	La Plata County, City of Durango, Town of Bayfield, Town of Ignacio, Homes Fund, Housing Solutions, Habitat for Humanity, and Economic Development Alliance	La Plata County, City of Durango, Town of Bayfield, Town of Ignacio, Homes Fund, Housing Solutions, Habitat for Humanity, and Economic Development Alliance	N/A	N/A	Support efforts to provide housing, which is accessible, safe, energy efficient, and affordable for all County residents. 1) Encourage and enable the private sector to provide an adequate housing supply, at a high quality, which meets the growing number of changing needs of La Plata County residents. 2) Promote compact housing development near existing central infrastructure/services which can most adequately support affordable housing development. 3) Preserve or provide for the replacement of existing affordable housing units, including mobile home parks.

CDAP #	Project	Rank	Category	State Economic Development Priority	Resiliency Linkage	Partners	Funding Resources	Cost Estimate	Jobs	Outcomes & Impacts
38	Extension of sewer service to La Posta area in support of commercial and residential development	High	Infrastructure: Sewer/Solid Waste	<p>Make Critical Investment in Community Infrastructure</p> <p>Support Local Community success in the energy transition</p>	<p>Building & Infrastructure Sustainability (BI4)</p> <p>Climate & Natural Hazard Resiliency (CN4)</p>	Economic Development Alliance, City of Durango, La Plata County, Private property owners, South Durango Sanitation District				<p>Encourage and promote safe and efficient sanitary sewer and solid waste disposal systems which meet existing and projected demands, promotes, and accommodates orderly growth and development, and protects the public health of the community.</p> <p>1) Identify and promote the maintenance of existing sanitary sewer facilities and encourage the responsible use of individual waste systems where such systems are the only alternative to sanitary sewer expansion and connection.</p> <p>2) identify and promote the maintenance of existing solid waste facilities; and encourage the expansion and appropriate design of multifunctional refuse locations to adequately serve the County's demands/needs.</p>

CDAP #	Project	Rank	Category	State Economic Development Priority	Resiliency Linkage	Partners	Funding Resources	Cost Estimate	Jobs	Outcomes & Impacts
39	Secure funding for upgrades for County roads experiencing increased traffic	Med	Infrastructure :Transportation	Make Critical Investment in Community Infrastructure Invest in Roads & Bridges	Internal to Community					Plan a transportation system to accommodate existing and future motorized and nonmotorized travel/circulation within La Plata County. 1) Identify and maintain the existing system of the County roadway network by mapping and articulating regularly needed improvements/maintenance.
40	Support Special Districts in meeting service requirements within their defined service areas.	Med	Infrastructure :Utility	Make Critical Investment in Community Infrastructure Support Local Community success in the energy transition	Building & Infrastructure Sustainability (BI1)	Multiple special districts throughout the County				Encourage and promote safe, efficient, and effective transmission and distribution of general utility throughout the County based on existing and projected demand, and to provide the opportunity for introduction of a utility service to the County where such opportunities can accommodate safe and secure utility delivery. 1) Identify and promote the maintenance needs of existing utility facilities and encourage safe and efficient delivery of utility services based on concurrent demands and known future needs for such services.

CDAP #	Project	Rank	Category	State Economic Development Priority	Resiliency Linkage	Partners	Funding Resources	Cost Estimate	Jobs	Outcomes & Impacts
41	Service extension to serve "Economic Development Areas" as defined in the Land Use Code.	Med	Infrastructure: Water	Leverage the Unique Assets of Rural Colorado Support Local Community success in the energy transition	Building & Infrastructure Sustainability (BI4) Climate & Natural Hazard Resiliency (CN4)	Multiple special districts and municipalities				Coordinate with appropriate Federal, State, and local agencies to address current and future water sources, demand, and conservation strategies. 1) Identify and promote the maintenance of existing potable and agricultural water distribution systems, and to identify locations for the development of future water distribution systems in a concurrent manner with associated needs and demands. 2) Provide incentives toward water conservation and appropriate water re-use when opportunities for such initiatives exist.

CDAP #	Project	Rank	Category	State Economic Development Priority	Resiliency Linkage	Partners	Funding Resources	Cost Estimate	Jobs	Outcomes & Impacts
42	Create Rural Water System for West Side of County	Med	Public Infrastructure	Leverage the Unique Assets of Rural Colorado	Building & Infrastructure Sustainability (BI4) Climate & Natural Hazard Resiliency (CN2)	La Plata West Water Authority (LPWWC) SW Water Conservancy District (SWWCD) Ani-mas/La Plata Water Conservation District (ALPWCD) La Plata Water Conservancy District (LPWCD) Southern Ute Indian Tribe Ute Mountain Ute Indian Tribe Lake Durango Water Authority (LDWA)	Colorado Water Conservation Board USDA Southern Ute Indian Tribe Ute Mt Ute Indian Tribe San Juan RC & D State Water Fund CDBG DoLA Colorado Water Resources and Power Development Authority LPWWC SWWCD ALP-WCD	Phase 1 estimated at \$3.85 to \$5 million	Construction related jobs	Goal is to create rural water system supplying water from Hesperus to the New Mexico state line. Completed special district formation. Complete project design and associated agreements providing for LDWA to provide treated water for initial LPWWA users. Complete phased distribution system design for the LPWWA distribution system. Signup required number of property owners to participate.
43	Emergency Watershed Protection Program Removed as Completed	High	Public Infrastructure	Leverage the Unique Assets of Rural Colorado	Building & Infrastructure Sustainability (BI4) Climate & Natural Hazard Resiliency (CN2)	La Plata County	National Resources Conservation Service DoLA Division of Homeland Security & Emergency Management	\$5M 75% federal grant from NRCS, 25% local match	Project Management, Engineering services, Construction jobs	Protection of individual lives and property. Protection of the Hesperosa Watershed and affected drainages. Restoration and mitigation of the effects of the 416 Fire in the burn scar.
44	Construct Search & Rescue Building Removed as Completed	High	Public Infrastructure	Leverage the Unique Assets of Rural Colorado	Building & Infrastructure Sustainability (BI6)	La Plata County La Plata County Search and Rescue	State DoLA County Private donations	N/A	N/A	Raised funds for grant match. Location identified. Create permanent home for search and rescue staff to manage and deploy services.

CDAP #	Project	Rank	Category	State Economic Development Priority	Resiliency Linkage	Partners	Funding Resources	Cost Estimate	Jobs	Outcomes & Impacts
45	Pursue mitigation efforts to protect the Wildland Urban Interface	High	Public Safety	Leverage the Unique Assets of Rural Colorado	Building & Infrastructure Sustainability (BI4) Climate & Natural Hazard Resiliency (CN4)	SWIF, RMRI, Public land agencies Private property owners,		N/A		<p>Ensure emergency preparedness planning and emergency services continues to meet or exceed the growing demands of the County's constituents and visitors.</p> <p>1) Continue to work and coordinate with public safety and emergency service providers to ensure adequate development standards are implemented.</p> <p>2) Continue to collaborate with emergency service providers to identify hazardous areas utilizing current technologies and determine appropriate mitigation requirements for development in those areas.</p> <p>3) Establish a system of measurement in order to regularly assess and evaluate level of service standards for public safety and emergency services within the County.</p>

CDAP #	Project	Rank	Category	State Economic Development Priority	Resiliency Linkage	Partners	Funding Resources	Cost Estimate	Jobs	Outcomes & Impacts
46	Forest Health, Water and Wildfire Risks	Med	Public/Private Lands	Leverage the Unique Assets of Rural Colorado Build on Current Successful Economic Development Programs	Climate & Natural Hazard Resiliency (CN3)	Colorado State Forest Service Colorado State Univ. US Forest Service BLM Fire Protection Districts Southern Ute Indian Tribe Wildfire Adapted Partnership Wildfire and Watershed Protection Group (WWPG)	National Fire Plan funds Fire hazard mitigation contractors Southwest Conservation Corps Region 9 EDD USDA if private land Southern Ute Tribe Timber industry	N/A	N/A	Address Forest Health, Water and Wildfire Risks 1) Reduce fire risk. 2) Strengthen timber products industry. 3) Improve forest health. 4) Control beetle infestation. 5) Reduce risk to life and property and protect watershed/community water supplies. Defensible space education resulting in defensible space created around values at risk.

CDAP #	Project	Rank	Category	State Economic Development Priority	Resiliency Linkage	Partners	Funding Resources	Cost Estimate	Jobs	Outcomes & Impacts
47	Develop Durango Mesa Park phase 1	Med	Recreation & Tourism	Leverage the Unique Assets of Rural Colorado Build on Current Successful Economic Development Programs	Future Ready Workforce & Economy (EW4) Community Capacity (CC3)	Durango Mesa Park Foundation, La Plata County, City of Durango, Visit Durango, Economic Development Alliance	Public Private Partnerships La Plata County City of Durango	Estimated \$150M total cost Phase 1 estimated \$15M (bike park and LPC fairgrounds)	N/A	Encourage public and private recreation activities which support the public health, safety, and welfare of the community. 1) Promote continued maintenance and dedication of areas where access to public lands may be impacted with increased development pressures; and recognize economic benefits of recreational/tourism components within and nearby proposed projects and development. 2) La Plata County Fairgrounds relocation.

CDAP #	Project	Rank	Category	State Economic Development Priority	Resiliency Linkage	Partners	Funding Resources	Cost Estimate	Jobs	Outcomes & Impacts
48	Rural High-Speed Connections & Fiber	High	Telecommunications	Make Critical Investment in Community Infrastructure	<p>Future Ready Economy & Workforce (EW1)</p> <p>Building & Infrastructure Sustainability (BI6)</p>	<p>SW Colorado Council of Governments</p> <p>La Plata Economic Alliance</p> <p>Private Telecom Companies</p> <p>Fort Lewis College</p> <p>La Plata County Area municipalities</p>	<p>DoLA Municipalities</p> <p>La Plata - \$260K set aside</p> <p>USDA Alliance</p> <p>SWCCOG</p> <p>CAF</p> <p>Private telecom companies</p>	<p>\$75K DoLA grant and \$25K match</p> <p>SWCCOG partners</p> <p>Where/what did this financial info come from? Is this from the regional broadband plan?</p>	N/A	<p>Provide Rural Areas with High-Speed Connections & Fiber</p> <p>1) Development of redundant broadband telecommunications connections in communities for regional broadband expansion.</p> <p>2) Fiber connection to airport and rural areas.</p> <p>3) SWCCOG received broadband planning grant to develop operations/IT plan to better utilize SCAN Network—provide database of equipment. Exploring partnerships with private firms for additional extensions.</p> <p>4) Strengthen Local Technology Planning Team to assist with identifying demand for technology and fill service provider, and infrastructure gaps. Provide Internet Services to all Households in La Plata County. 100% high speed internet coverage by 2020. Additional \$20-\$30 million annual in County GDP.</p>

CDAP #	Project	Rank	Category	State Economic Development Priority	Resiliency Linkage	Partners	Funding Resources	Cost Estimate	Jobs	Outcomes & Impacts
49	Add Airline Flight(s) & Round-Trip Routes at Durango-La Plata County Airport	Med	Transportation	Community Identified Priorities	Building & Infrastructure Sustainability (BI1)	Durango/La Plata County Airport Airport Commission La Plata Economic Alliance Air Carriers La Plata County City of Durango Southern Ute Indian Tribe	Private sector incentives Federal Air Transportation grant Local businesses Local government	N/A	N/A	Expanded and enhanced regional air service. Provide better access to East bound destinations. Expand flight schedule. Seek round trip route to Houston.
50	Continue Capital improvements to Durango/ La Plata County Airport	Med	Transportation	Community Identified Priorities	Building & Infrastructure Sustainability (BI1)	City of Durango La Plata County FAA CDOT - Aviation	Airport Revenues FAA Airport Improvement Program Grants CDOT Discretionary Aviation Grants Airport passenger facility charges	\$34 million in capital projects identified through 2025	N/A	Rehabilitate Taxiway A. Repair automobile parking lot pavements. Repair public roadways. Upgrade access control and surveillance. Purchase new Aircraft Rescue Firefighting (ARFF) vehicle. Construct improvements to water and wastewater systems.

CDAP #	Project	Rank	Category	State Economic Development Priority	Resiliency Linkage	Partners	Funding Resources	Cost Estimate	Jobs	Outcomes & Impacts
51	Southwest Colorado US 550-US 160 Connection South Design-Build Project	High	Transportation	Invest in Roads & Bridges	Building & Infrastructure Sustainability (BI1)	CDOT La Plata County City of Durango Southern Ute Indian Tribe Southern Ute Tribe Growth Fund SWCCOG	FASTER/ SB 267/ SUR/ RPP State of Colorado DOLA Southern Ute Tribe Growth Fund County Durango CDOT	\$99.6M estimated total cost	Contractor jobs	This project is focused on the US Highway 550 connection to US Highway 160 in La Plata County. The connection will realign US 550 directly into the existing US 160 interchange, eliminating the steep and windy grade of the current US 550 Farmington Hill and improving roadway geometry. The project will include wildlife highway mitigation features which will reduce animal-vehicle collisions. Current work is focusing on construction of the bridge piers and bridge caps, earthwork operations, erosion control measures as work progresses and relocation of the 8"HP gas main. Construction began in August 2020 with an estimated completion date in fall 2022

CDAP #	Project	Rank	Category	State Economic Development Priority	Resiliency Linkage	Partners	Funding Resources	Cost Estimate	Jobs	Outcomes & Impacts
52	US 550 intersection and pedestrian improvements from 9th Street to 12th Street in Durango	High	Transportation	Invest in Roads & Bridges	Building & Infrastructure Sustainability (BI1)	CDOT SW Regional Transportation Planning Region (SWTPR) Regional Transit Coordinating Council Area governments SWC-COG	Transit providers Area governments Transit Funding sources SWC-COG CDOT	\$4M	Construction jobs	1) Intersection improvements from 9th Street to 12th Street 2) At 9th Street, replacement of the existing signal, extension of the westbound right turn lane, new ADA curb ramps, and mill and fill 3) At 12th Street, upgrades to the existing pedestrian hybrid beacon (HAWK), removal of channelizing island, and mill and fill 4) Between 8th Street and 14th Street, new concrete medians, and the installation of new electrical conduit. This project has been awarded and construction is scheduled for summer 2021.
53	US 160 and CR 225 intersection improvements (roundabout and safety improvements)	High	Transportation	Invest in Roads & Bridges	Building & Infrastructure Sustainability (BI1)	CDOT SW Regional Transportation Planning Region (SWTPR) Regional Transit Coordinating Council Area governments SWCCOG	CDOT - State & Federal Funds Area Governments	\$5M	Construction jobs	Outlined per the SW Regional Transportation Plan

CDAP #	Project	Rank	Category	State Economic Development Priority	Resiliency Linkage	Partners	Funding Resources	Cost Estimate	Jobs	Outcomes & Impacts
54	US 160 Elmore's East improvements including widening, access improvements, and wildlife mitigation	High	Transportation	Invest in Roads & Bridges	Building & Infrastructure Sustainability (BI1)	CDOT SW Regional Transportation Planning Region (SWTPR) Regional Transit Coordinating Council Area governments SWCCOG	CDOT - State & Federal Funds Area Governments	\$34.53M	Construction jobs	Outlined per the SW Regional Transportation Plan
55	US 160 Dry Creek improvements including widening, new structures, realignment of CR 223, shoulder widening, and access consolidation	High	Transportation	Invest in Roads & Bridges	Building & Infrastructure Sustainability (BI1)	CDOT SW Regional Transportation Planning Region (SWTPR) Regional Transit Coordinating Council Area governments SWCCOG	CDOT - State & Federal Funds Area Governments	\$36M	Construction jobs	Outlined per the SW Regional Transportation Plan
56	US 160 safety and mobility improvements including passing lanes, turn lanes, shoulders, and wildlife mitigation from CR 225 to Dry Creek	High	Transportation	Invest in Roads & Bridges	Building & Infrastructure Sustainability (BI1)	CDOT SW Regional Transportation Planning Region (SWTPR) Regional Transit Coordinating Council Area governments SWCCOG	CDOT - State & Federal Funds Area Governments	\$21M	Construction jobs	Outlined per the SW Regional Transportation Plan

CDAP #	Project	Rank	Category	State Economic Development Priority	Resiliency Linkage	Partners	Funding Resources	Cost Estimate	Jobs	Outcomes & Impacts
57	Outrider stops and shelter improvements in Durango , Mancos, Cortez, Dolores, and Rico	High	Transportation	Invest in Roads & Bridges	Building & Infrastructure Sustainability (BI1)	CDOT SW Regional Transportation Planning Region (SWTPR) Regional Transit Coordinating Council Area governments	Transit providers Area governments Transit Funding sources SWC-COG CDOT	\$0.40M	Construction jobs	Outlined per the SW Regional Transportation Plan
58	Outrider bus service between Durango and Pagosa Springs	High	Transportation	Invest in Roads & Bridges	Building & Infrastructure Sustainability (BI1)	CDOT SW Regional Transportation Planning Region (SWTPR) Regional Transit Coordinating Council Area governments	Transit providers Area governments Transit Funding sources SWC-COG CDOT	\$2.69M	Construction jobs	Outlined per the SW Regional Transportation Plan
59	Outrider bus service between Durango and Dove Creek	High	Transportation	Invest in Roads & Bridges	Building & Infrastructure Sustainability (BI1)	CDOT SW Regional Transportation Planning Region (SWTPR) Regional Transit Coordinating Council Area governments	Transit providers Area governments Transit Funding sources SWC-COG CDOT	\$2.05M	Construction jobs	Outlined per the SW Regional Transportation Plan

CDAP #	Project	Rank	Category	State Economic Development Priority	Resiliency Linkage	Partners	Funding Resources	Cost Estimate	Jobs	Outcomes & Impacts
60	Durango Transit Zone 7 route expansions from city limits to Durango/La Plata County Airport, Hermosa, Durango West, Hesperus, and Edgemont	High	Transportation	Invest in Roads & Bridges	Building & Infrastructure Sustainability (BI1)	CDOT SW Regional Transportation Planning Region (SWTPR) Regional Transit Coordinating Council Area governmentsSWC-COG	Transit providers Area governments Transit Funding sources SWC-COG CDOT	\$8.0M	Construction jobs	Outlined per the SW Regional Transportation Plan
61	Southern Ute Indian Tribe CEDS 2018-2022	High	Comprehensive vet Economic Development Plan	Community Identified Priorities	Internal to Community	Outlined per the SUI Plan	Outlined per the SUI Plan	Outlined per the SUI Plan	Outlined per the SUI Plan	Outlined per the SUI Plan
62	LPC - Durango Strategic Plan on Homelessness 2020	High	LPC - Durango Strategic Plan on Homelessness	Addresses Economic Development Goals	Addresses Resiliency Initiatives	Outlined per the Homeless Plan	Outlined per the Homeless Plan	Outlined per the Homeless Plan	Outlined per the Homeless Plan	Outlined per the Homeless Plan

CDAP #	Project	Rank	Category	State Economic Development Priority	Resiliency Linkage	Partners	Funding Resources	Cost Estimate	Jobs	Outcomes & Impacts
63	Homegrown Talent Initiative-Durango High School	High	Education	Fulfill Every Child's Potential	Future Ready Economy & Workforce (EW3-5)	Durango High School Colorado Education Initiative (CEI)Colorado Succeeds Region 9 EDD La Plata Economic Alliance Fort Lewis College Pueblo Community College Numerous industry partners	Homegrown Talent Initiative Durango School District 9R Fundraising	Approximately \$100,000 \$50,000 HTI 2-1 match by HTI for local funds raised Fundraised & match \$30,000	1 PT internship coordinator	1) Enhance work-based learning through job shadow, mentorships, internships and capstones. 2) Build leadership capacity with students and staff. 3) Create regionally aligned, industry-aligned career tech education (CTE) opportunities.
64	Implement Bond Measures for Durango Schools	High	Education	Fulfill Every Child's Potential	Building & Infrastructure Sustainability (BI4) Community Capacity (CC3)	Durango School District 9R, City of Durango	Voter Approved Bond Issue	\$ 90 M	Outlined per the Plan under development	Repair and replace aging school district infrastructure
65	Facilities assessment for highest and best use of underutilized county properties.	High	Land Use	Leverage the Unique Assets of Rural Colorado	Building & Infrastructure Sustainability (BI2) Climate & Natural Hazard Resiliency (CN3)	La Plata County	La Plata County	N/A	N/A	More efficient use of county property.